

USB 2.0 UVC LE Installation

Get support

support@ids-imaging.com



Welcome

Read these short instructions and see how easy it is to setup an IDS UVC camera. More information can be found on our website www.ids-imaging.com.

IDS Imaging Development Systems GmbH
Dimbacher Str. 6-8
D-74182 Obersulm, Germany
Phone: +49 7134/96196-0
Fax: +49 7134/96196-99
Email: info@ids-imaging.com

Important product information



Attention!

Make sure to avoid mechanical or electrical damage of the printed circuit board or its connections.

Do not touch the printed circuit board while it is powered. Always hold the board by the edges to avoid the risk of electrostatic discharge damage.

System requirements

PC with Pentium IV CPU or better (Recommended: Intel mainboard chipset i855 or newer)
A free USB 2.0 port (High Speed 480 Mbit/s)

Operating system

Windows Vista/7/8, Linux or Mac OS X

Operating temperature

0 °C ... +50 °C (+32 °F ... 122 °F)

Storage temperature

-20 °C ... +80 °C (-4 °F ... 176 °F)

Relative humidity

20 % ... 80% (non-condensing)

Reference player

Note that the available camera functions will differ depending on the used player. The camera has been tested with the following players:

Windows

- VLC
- AmCap

Linux

- VLC
- Gvvcview

Mac OS X

- VLC
- Facetime

Connect the camera

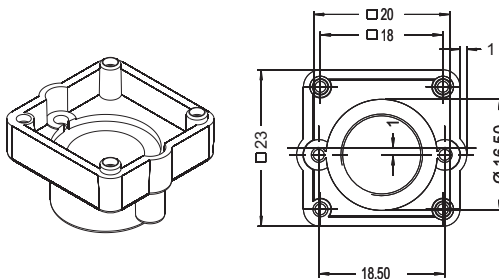


The camera has a USB 2.0 mini B connector. Connect the camera with a free USB port using a USB 2.0 cable.

Option: S-mount lens holder

Mount the lens holder on the printed circuit board. Pay attention to the different holes. Tighten the screws of the lens holder with max. 0.25 Nm.

Note: The S-mount lens holder has no HQ filter. Therefore, use an IR-corrected S-mount lens to get colorfast results.



Camera functions

Brightness: -10 ... +10
(default: +4, mode: manual)

Contrast: 0 ... +20
(default: +12, mode: manual)

Color: -5 ... +5
(default: 0, mode: manual)

Saturation: 0 ... +10
(default: +4, mode: manual)

Sharpness: 0 ... +10
(default: 5, mode: manual)

Gamma: +100 ... +200
(default: +150, mode: manual)

White balance: +2800 ... +6500
(default: auto, mode: manual/auto)

Gain: +64 ... +240
(default: +64, mode: manual)

Noise suppression: +2 ... +62
(default: +2, mode: manual)

Exposure time: -10 ... 0
(default: auto, mode: manual/auto)

Power frequency: 50/60 Hz
(default: 50 Hz, mode: manual)

Intended use

IDS industrial cameras are to be used to capture images for visualization and image processing tasks.

Safety instruction

- Read carefully the information before installing and using the product.
- The producer is not responsible for damages and injury, which can occur due to false handling of the product and ignoring the safety instructions. All warranty will be spoiled in this case.
- If the product is modified or changed the CE, FCC and/or UL approval becomes invalid. In this case the customer is responsible for ensuring product conformity.
- This product is not a toy and should be kept and operated out of reach of children.
- Keep packaging material like films away from children. In case of abuse there is a risk of suffocation.
- Only operate the product under ambient conditions described for each product.
- Lay cables in such way that no one can step on or they do not represent a trip hazard.
- The product is not authorized for use in security relevant applications. If it is used in security relevant applications, the customer is responsible for the necessary approvals.