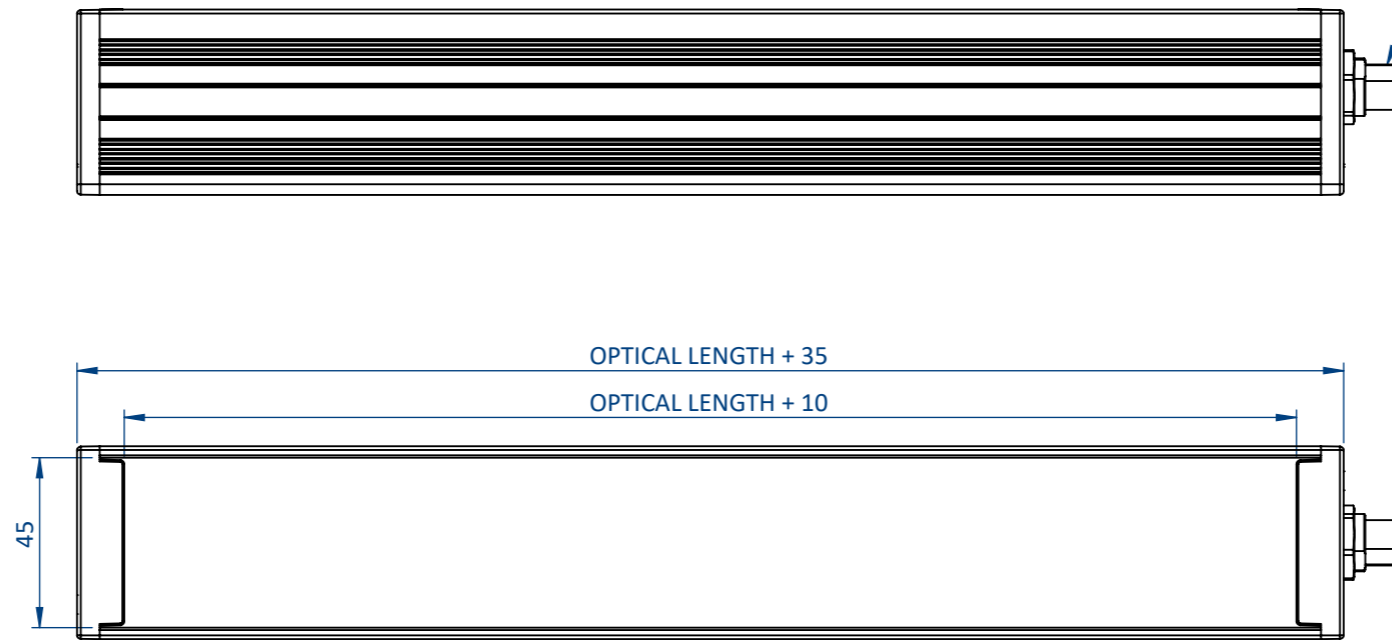
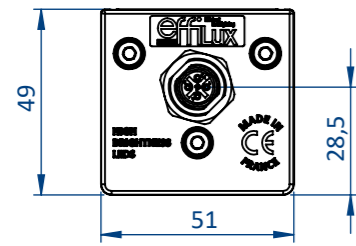
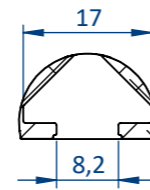
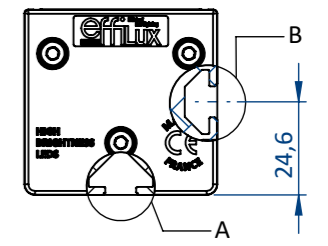


THIS DOCUMENT AND THE INFORMATION IT CONTAINS ARE PROPERTY OF EFFILUX AND CONFIDENTIAL. THEY SHALL NOT BE REPRODUCED NOR DISCLOSED TO ANY PERSON EXCEPT TO THOSE HAVING A NEED TO KNOW THEM WITHOUT PRIOR WRITTEN CONSENT OF EFFILUX

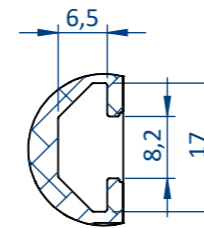
CE DOCUMENT ET LES INFORMATIONS QU'IL CONTIENT SONT CONFIDENTIELS ET SONT LA PROPRIETE EXCLUSIVE DE EFFILUX. ILS NE DOIVENT ETRE COMMUNIQUEES QU' AUX PERSONNES AYANT A EN CONNAITRE ET NE PEUVENT ETRE REPRODUITS NI DIVULGUES A TOUTE AUTRE PERSONNE SANS AUTORISATION PREALABLE ECRITE PAR EFFILUX



M12 OR M12P DEPENDING ON POWER CONSUMPTION REFER TO THE DATASHEET

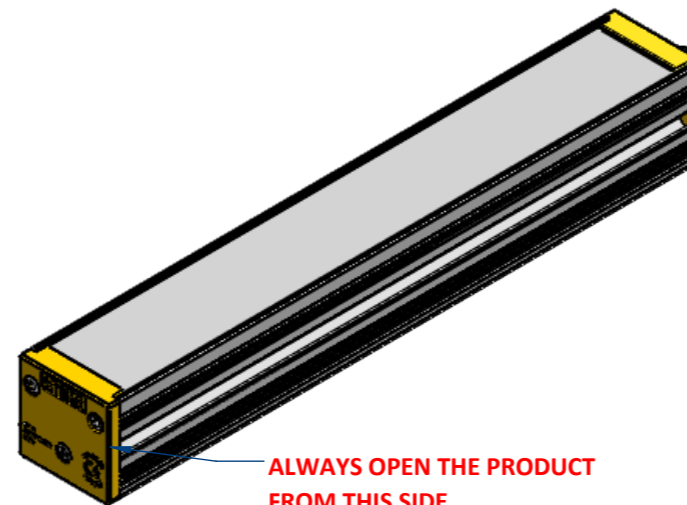


DETAIL A  
SCALE 1 : 1  
MOUNTING: T-NUT 8MM SLOT, M6



DETAIL B  
SCALE 1 : 1  
MOUNTING: T-NUT 8MM SLOT, M6

OPTICAL LENGTH (XXXX)	PRODUCT LENGTH	WEIGHT (KG)
60	95	0,15
100	135	0,2
200	235	0,3
300	335	0,4
400	435	0,5
500	535	0,6
600	635	0,7
...	...	...
2800	2835	2,9
2900	2935	3,0



PLEASE REFER TO THE SPECIFIC DOCUMENTATION FOR WIRING LAYOUT

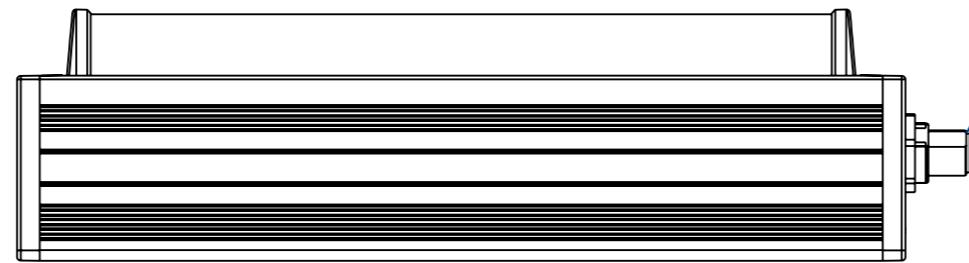
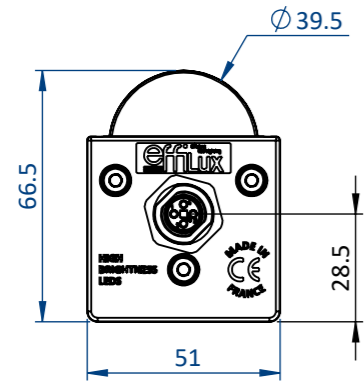
Reference <b>STANDARD EFFI-FLEX2</b>		IP <b>5X</b>	1 Rue de Terre Neuve Mini Parc du Verger Bâtiment E 91940 Les Ulis, France	
Designation <b>EFFI-FLEX2-XXXX-ZZZ-WW-PP</b>		Mail: sales@effilux.fr Tel : +33 9 72 52 70 03 www.effilux.com		
Revision /	Date 06/12/2021	Unit : mm	General Tolerances	
Scale 1:2	Size A3	Page 1/1	X ≤ 300 TOL ±0,2 300 < X < 800 TOL ±0,5 X ≥ 800 TOL ± 1	

H G F E D C B A

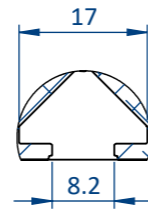
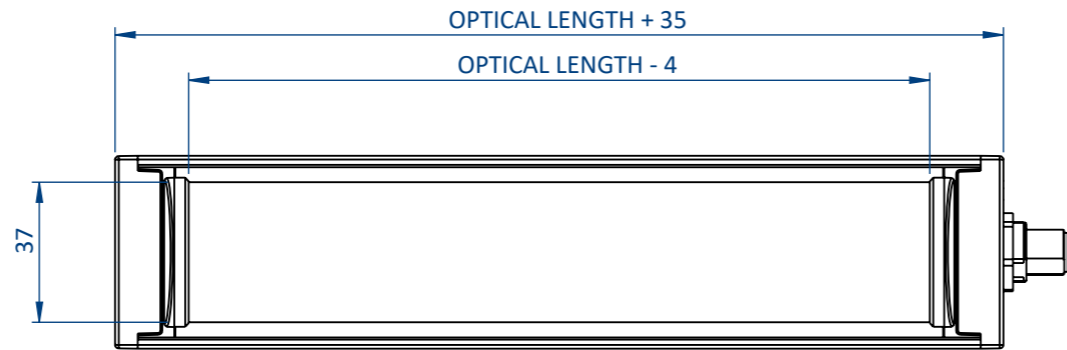
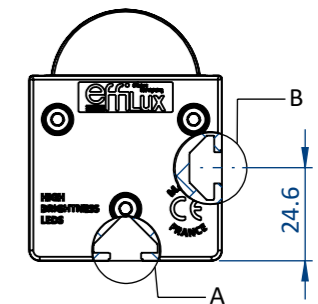
H G F E D C B A

THIS DOCUMENT AND THE INFORMATION IT CONTAINS ARE PROPERTY OF EFFILUX AND CONFIDENTIAL. THEY SHALL NOT BE REPRODUCED NOR DISCLOSED TO ANY PERSON EXCEPT TO THOSE HAVING A NEED TO KNOW THEM WITHOUT PRIOR WRITTEN CONSENT OF EFFILUX

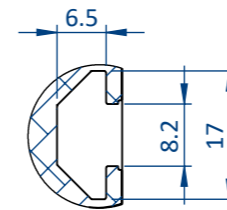
CE DOCUMENT ET LES INFORMATIONS QUI'IL CONTIENT SONT CONFIDENTIELS ET SONT LA PROPRIETE EXCLUSIVE DE EFFILUX. ILS NE DOIVENT ETRE COMMUNIQUEES QU' AUX PERSONNES AYANT A EN CONNAITRE ET NE PEUVENT ETRE REPRODUITS NI DIVULGUES A TOUTE AUTRE PERSONNE SANS AUTORISATION PREALABLE ECRITE PAR EFFILUX



M12 OR M12P DEPENDING ON POWER CONSUMPTION  
REFER TO THE DATASHEET

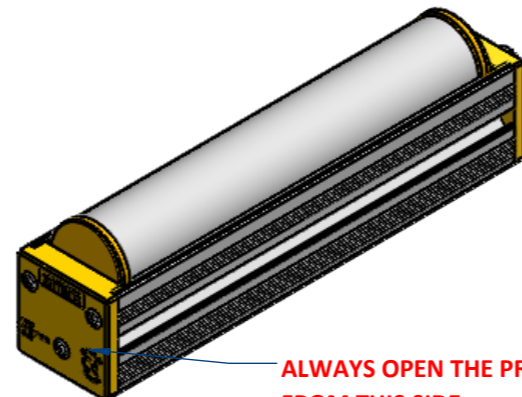


DETAIL A  
SCALE 1 : 1  
MOUNTING: T-NUT 8MM SLOT, M6



DETAIL B  
SCALE 1 : 1  
MOUNTING: T-NUT 8MM SLOT, M6

OPTICAL LENGTH (XXXX)	PRODUCT LENGTH	WEIGHT (KG)
60	95	0,2
100	135	0,3
200	235	0,4
300	335	0,6
400	435	0,7
500	535	0,9
600	635	1,0
...	...	...
2800	2835	4,5
2900	2935	4,6



**ALWAYS OPEN THE PRODUCT FROM THIS SIDE**

**PLEASE REFER TO THE SPECIFIC DOCUMENTATION FOR WIRING LAYOUT**

Reference <b>EFFI-FLEX2 CYL</b>	IP <b>5X</b>	1 Rue de Terre Neuve Mini Parc du Verger Bâtiment E 91940 Les Ulis, France
Designation <b>EFFI-FLEX2-XXXX-ZZZ-TR-P1-LS-CYL</b>		Mail: sales@effilux.fr Tel : +33 9 72 52 70 03 www.effilux.com
Revision /	Date 09/12/2022	Unit : mm
Scale 1:2	Size A3	Page 1/1
General Tolerances		<b>effilux</b> Efficient Led Lighting
X ≤ 300 TOL ±0,2 300 < X < 800 TOL ±0,5 X ≥ 800 TOL ± 1		