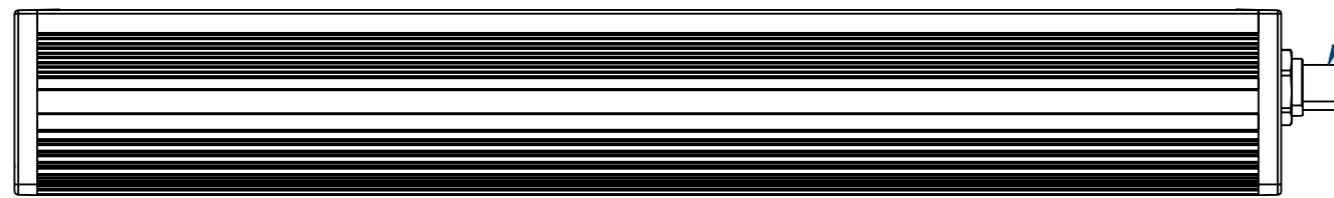
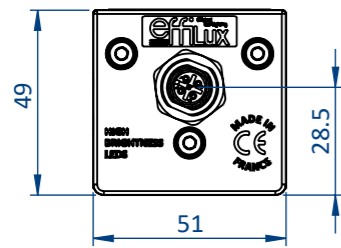
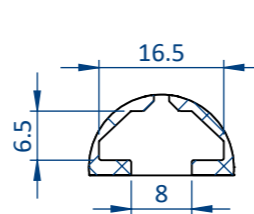
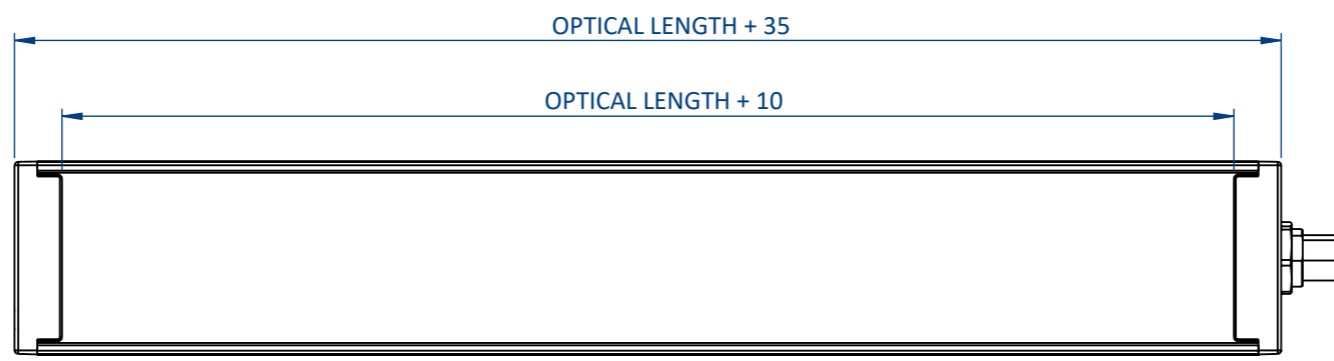
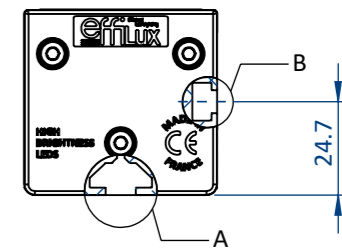


THIS DOCUMENT AND THE INFORMATION IT CONTAINS ARE PROPERTY OF EFFILUX AND CONFIDENTIAL. THEY SHALL NOT BE REPRODUCED NOR DISCLOSED TO ANY PERSON EXCEPT TO THOSE HAVING A NEED TO KNOW THEM WITHOUT PRIOR WRITTEN CONSENT OF EFFILUX

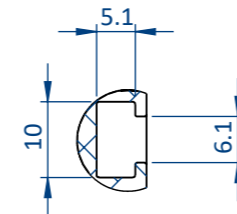
CE DOCUMENT ET LES INFORMATIONS QU'IL CONTIENT SONT CONFIDENTIELS ET SONT LA PROPRIETE EXCLUSIVE DE EFFILUX. ILS NE DOIVENT ETRE COMMUNIQUEES QU'AUX PERSONNES AYANT A EN CONNAITRE ET NE PEUVENT ETRE REPRODUITS NI DIVULGUES A TOUTE AUTRE PERSONNE SANS AUTORISATION PREALABLE ECRITE PAR EFFILUX



M12 OR M12P DEPENDING ON POWER CONSUMPTION REFER TO THE DATASHEET

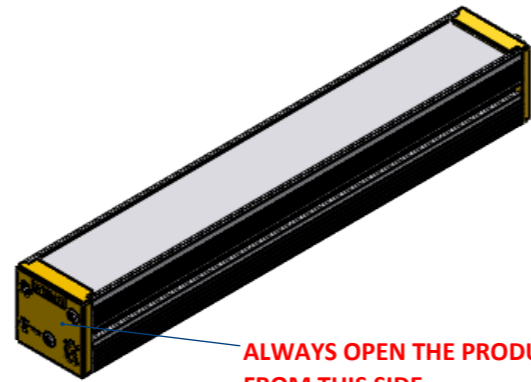


DÉTAIL A
SCALE 1 : 1
MOUNTING: T-NUT 8MM SLOT, M6



DÉTAIL B
SCALE 1 : 1
MOUNTING: STANDARD NUT M6

NUMBER OF LED-XXX (STANDARD VERSION)	OPTICAL LENGTH	PRODUCT LENGTH	WEIGHT (KG)
1 LED	20	55	0,09
3 LED	60	95	0,15
5 LED	100	135	0,2
10 LED	200	235	0,3
15 LED	300	335	0,4
20 LED	400	435	0,5
25 LED	500	535	0,6
...
140 LED	2800	2835	2,9
145 LED	2900	2935	3,0



ALWAYS OPEN THE PRODUCT FROM THIS SIDE

PLEASE REFER TO THE SPECIFIC DOCUMENTATION FOR WIRING LAYOUT

Reference EFFI-FLEX	IP 5X	1 Rue de Terre Neuve Mini Parc du Verger Bâtiment E 91940 Les Ulis, France
Designation EFFI-FLEX-XXX-ZZZ-WW-PP		Mail: sales@effilux.fr Tel : +33 9 72 52 70 03 www.effilux.com
Revision /	Date 13/02/2023	Unit : mm
Scale 1:2	Size A3	Page 1/1
General Tolerances		
X ≤ 300 TOL ±0,2 300 < X < 800 TOL ±0,5 X ≥ 800 TOL ± 1		