

NOMINAL WORKING DISTANCE =
135,5 mm ± 3%

FOCUSING
ADJUSTMENT
SYSTEM

LOCKING
SCREW

$\phi 75\text{ h}8\text{ -}0.05$
CLAMPING DIAMETER

$\phi 75\text{ h}8\text{ -}0.05$
CLAMPING DIAMETER

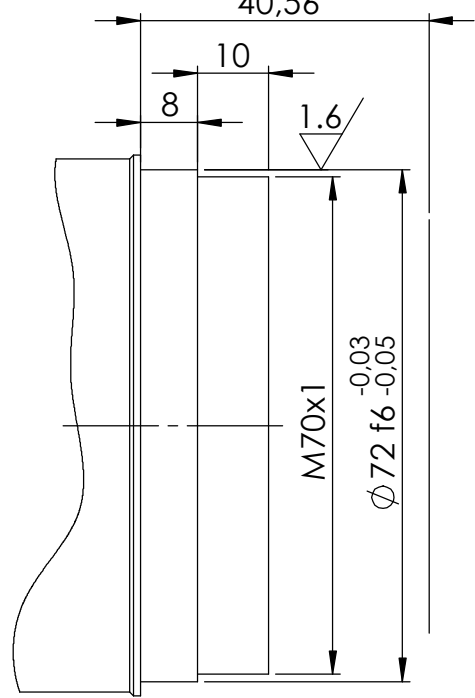
FLANGE
DISTANCE
6,56

M72x0,75
 $\phi 76$

REMOVABLE MOUNT:
Different threads, pitches
and flange distances on request

FROM RABBET
TO DETECTOR PLANE
40,56

REAR PART OF LENS



REMOVABLE MOUNT

Material	N.A.		Mass	1080 g	Scale	1:1
Surface treatment	N.A.		Project-Prod.item/Instrument	MC12K100X		
Geometrical tolerance (ISO 2768-2)			Undimensioned bevels	0.5x45°	Description Layout	
Linear tolerance (ISO 2768-2)						
0.5	>3±	>6±	>30±	>120	>400±	>1000
±3	6	30	120	±400	1000	±2000
±0.1	±0.1	±0.2	±0.3	±0.5	±0.8	±1.2
Class			Class	K	m	
Class			Class	±2	±2	
Date			Name		Drawing No.	
Designed 28/02/13			A.Vasconetto		21271-0-A	
Draw 28/02/13			A.Vasconetto		1/1	
Checked X			C.Sedazzari		Reproduction forbidden without specific authorization	

