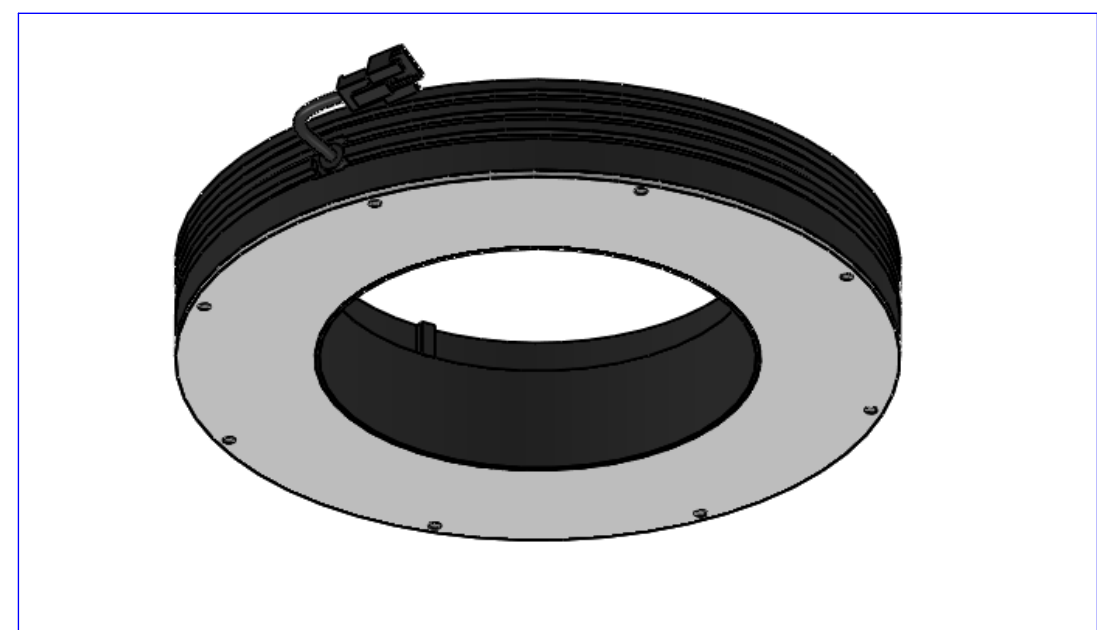


Connector cable (50cm)

active area

clamping screws

clamping system



Material		N.A.		Mass		850 g		Scale		1:2					
Surface treatment		N.A.		Project-Prod.item/Instrument		LTRN80		Description		Layout LTRN80					
Geometrical tolerance (ISO 2768-2)								Class	K	Undimensioned bevels					
Linear tolerance (ISO 2768-2)								Class	m	Undimensioned radii					
0.5	>3	>6	>30	>120	>400	>1000	>2000	0.5x45°	R 0.5	Drawing No.					
±3	±6	±30	±120	±400	±1000	±2000	±4000								
±0.1	±0.1	±0.2	±0.3	±0.5	±0.8	±1.2	±2	Date		Name					
								Designed		27/03/12		Date		Name	
								Draw		27/03/12		Date		Name	
								Checked		X		Date		Name	
OPTO ENGINEERING THE TELECENTRIC COMPANY OPTO ENGINEERING S.r.l. - 46100 Mantova Italy - Via Cremona, 29/2 - Tel. +39 0376 263525 - e-mai: info@opto-engineering.com - http://www.opto-engineering.com								C.Sedazzari		16444-0-A		Sheet			
										1/1					
Reproduction forbidden without specific authorization															