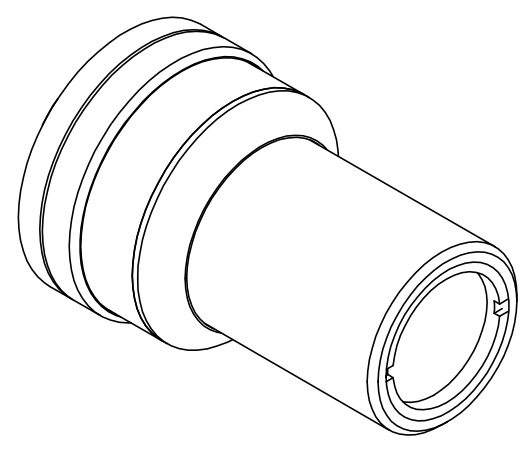
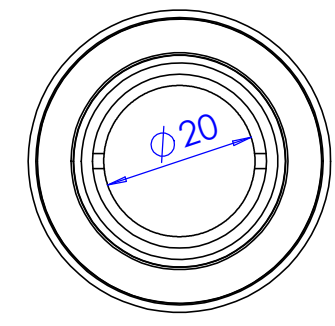
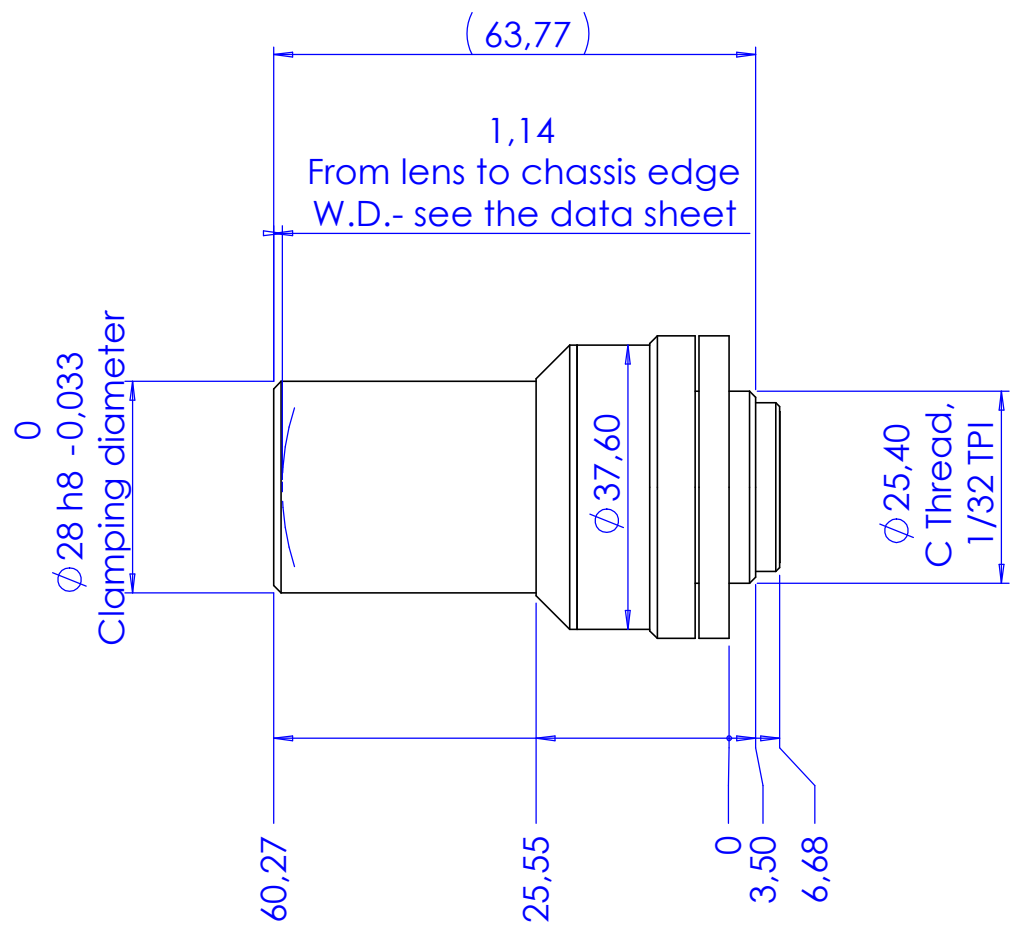


1 2 3 4 5 6 7 8

Rev No.	Description	Date	Name
A	First light	09/01/12	A.Vismara



D
C
B
A

D
C
B
A

Material	N.A.		Mass	0.160 kg	Scale	1:1
Surface treatment	N.A.		Project-Prod.item/Instrument Telecentric lens 23 12			
Geometrical tolerance (ISO 2768-2)		Class	K	Undimensioned bevels		
Linear tolerance (ISO 2768-2)		Class	m	1x45°		
0,5	>3÷	>6÷	>30÷	>120	>400÷	>1000
±3	6	30	120	±400	1000	±2000
±0.1	±0.1	±0.2	±0.3	±0.5	±0.8	±1.2
				Undimensioned radii		R 0.5
		Date	Name	Drawing No.		
		Designed	09/01/12	A.Vismara	02051-0-A	
		Drawn	09/01/12	A.Vismara	Sheet	
		Checked	X	C. Sedazzari	1/1	
OPTO ENGINEERING S.r.l. - 46100 Mantova Italy - Via Cremona, 29/2 - Tel. +39 0376 263525 - e-mai: info@opto-engineering.com - http://www.opto-engineering.com						

1 2 3 0 1 2 3 4 5 6 7 8 9 10 6 7 8