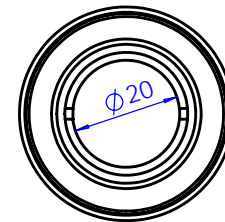
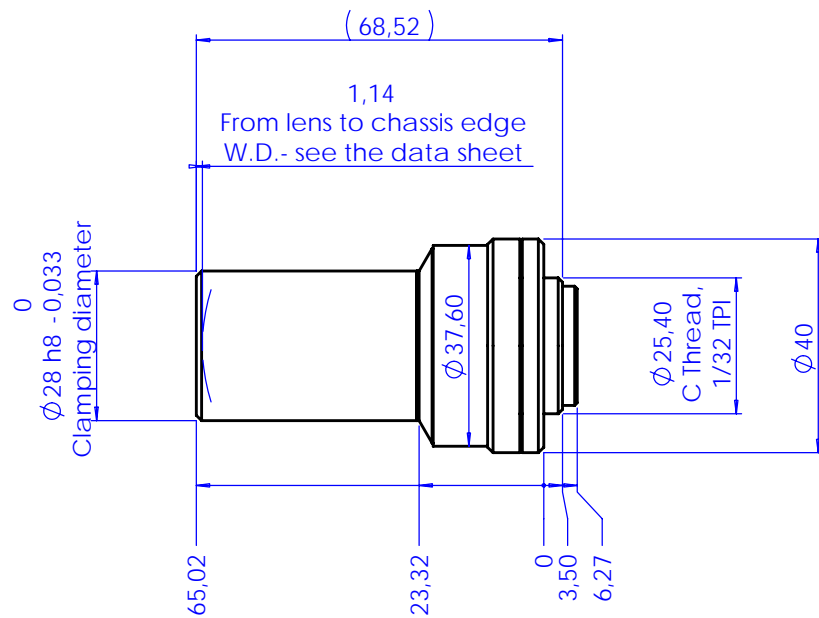


Rev No.	Description	Date	Name
A	Layout	07/06/05	A.Vismara
B	Redesign: inox C thread, brand ring	25/09/08	A.Vismara



Material	N.A.		Mass	0.160 kg	Scale	1:1			
Surface treatment	N.A.		Project-Prod.Item/Instrument Telecentric lens 23 09						
Geometrical tolerance (ISO 2768-2)		Class	K	Undimensioned bevels	1x45°	Description ASSEMBLY			
Linear tolerance (ISO 2768-2)		Class	m	Undimensioned radii	R 0.5				
0.5	>3-	>6-	>30-	>120	>400-	>1000	>2000	Drawing No. 02009-0-B	Sheet 1/1
+3	6	30	120	+400	1000	+2000	+4000		
±0.1	±0.1	±0.2	±0.3	±0.5	±0.8	±1.2	±2	Date	
		Designed		07/06/05	A.Vismara		Name		Reproduction forbidden without specific authorization
		Draw		25/09/08	A.Vismara		Drawing No.		
		Checked		X	C. Sedazzari		02009-0-B		
OPTO ENGINEERING S.r.l. - 46100 Mantova Italy - Via Cremona, 29/2 - Tel. +39 0376 263525 - e-mai: info@opto-engineering.com - http://www.opto-engineering.com									