

TECHSPEC® 2.0X In-Line Illumination SilverTL™ Telecentric Lens

#88-348



2.0X In-Line Illumination SilverTL™ Telecentric Lens, #88-348

TECHSPEC® SilverTL™ Telecentric Lenses are ideal for both on-line and off-line machine vision production applications that require accurate measurements. These lenses combine high quality optics with a simplified non-focusing mechanical design and adjustable iris with a locking set screw. TECHSPEC® SilverTL™ Telecentric Lenses are designed for metrology and gauging applications and offer inline illumination options for maximum versatility. Each lens also features a standard front filter thread for use with [color filters](#), [polarizers](#), [protective windows](#), and [illumination adapters](#) for LED or fiber-optic ring lights.

Note: Mounting brackets are available that fit the 30mm diameter mounting surface.

Length excluding Threads (mm):	144.60
Working Distance Tolerance (mm):	±3
Resolution, Image Space MTF @ f/10:	>40% @ 40 lp/mm
Coating:	425 - 675nm BBAR
Construction:	Anodized Aluminum
Depth of Field (mm):	±0.13 at f/10 (20% @ 20 lp/mm)

Optical

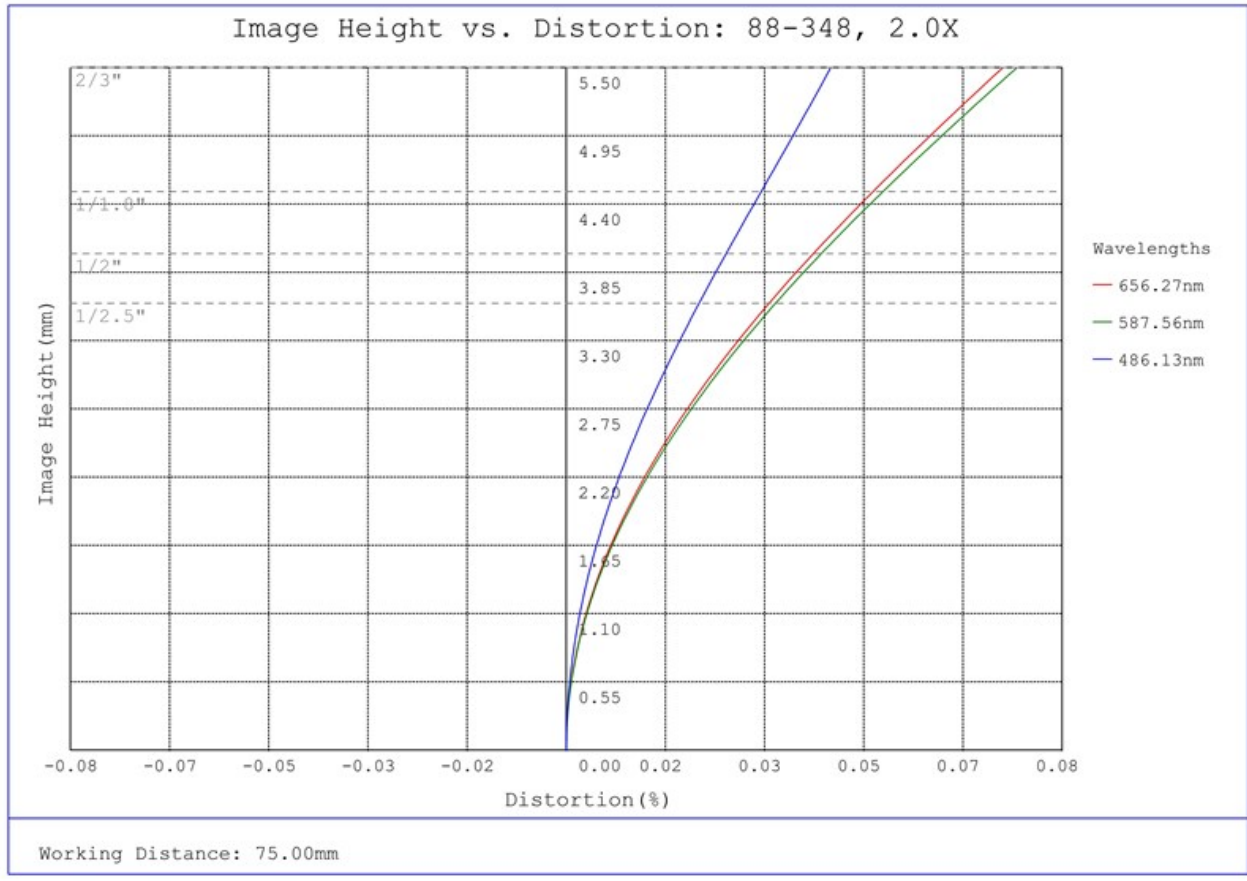
Horizontal Field of View, 1/2" Sensor:	3.2mm
Horizontal Field of View, 2/3" Sensor:	4.4mm
Horizontal Field of View, 1/3" Sensor:	2.4mm
Numerical Aperture NA, Object Side:	0.164
Typical Telecentricity @ 588nm (°):	<0.075
Typical Distortion @ 588nm (%):	<0.040
Primary Magnification PMAG:	2X
Maximum Sensor Format:	2/3"
Working Distance (mm):	75.00
Aperture (f/#):	f/10 - f/22
FOV @ Max Sensor Format, H x V (mm):	4.4 x 3.3
Lens Wavelength Range:	VIS

Mechanical

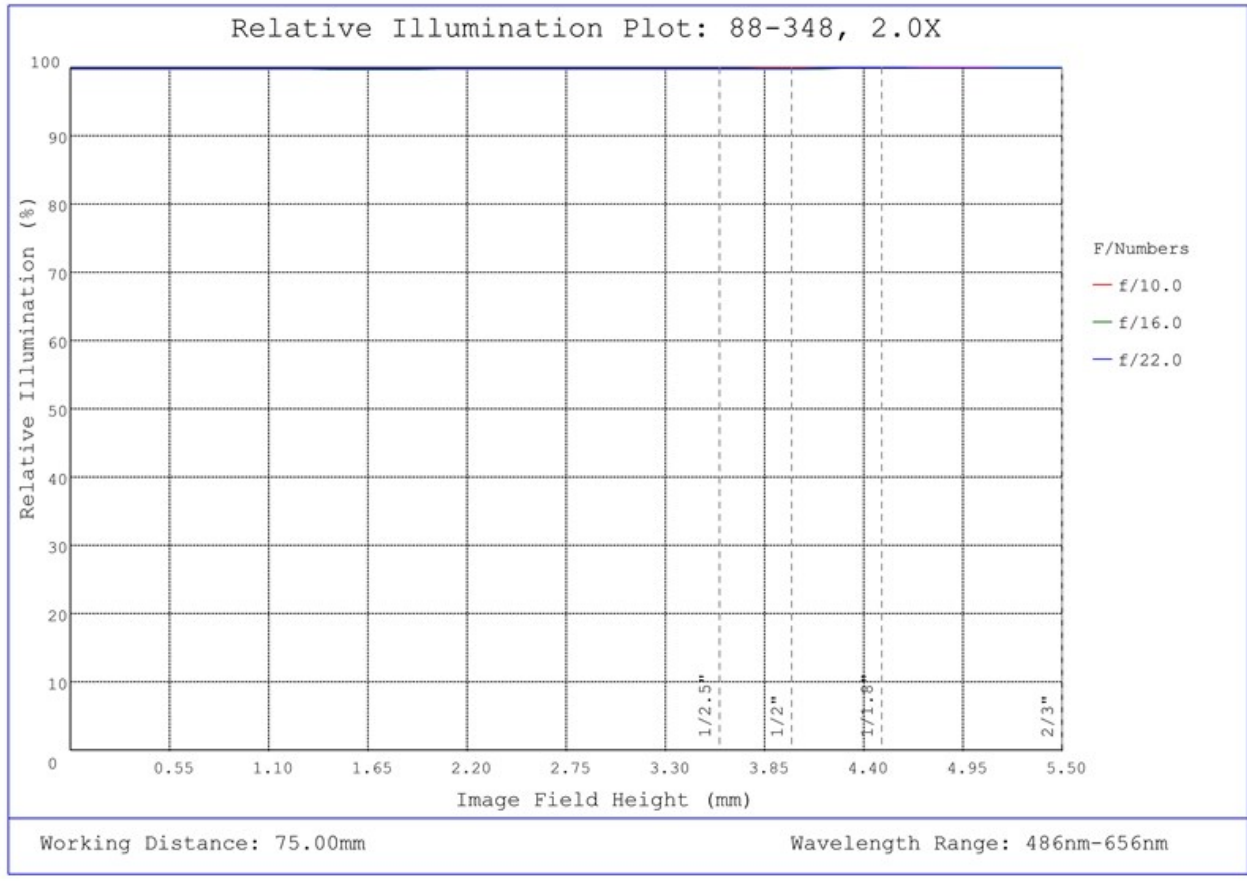
Filter Thread:	M43 x 0.75 (Female)
Maximum Diameter (mm):	45.00
Weight (g):	314
Number of Elements (Groups):	8 (7)
Mount:	C-Mount

General

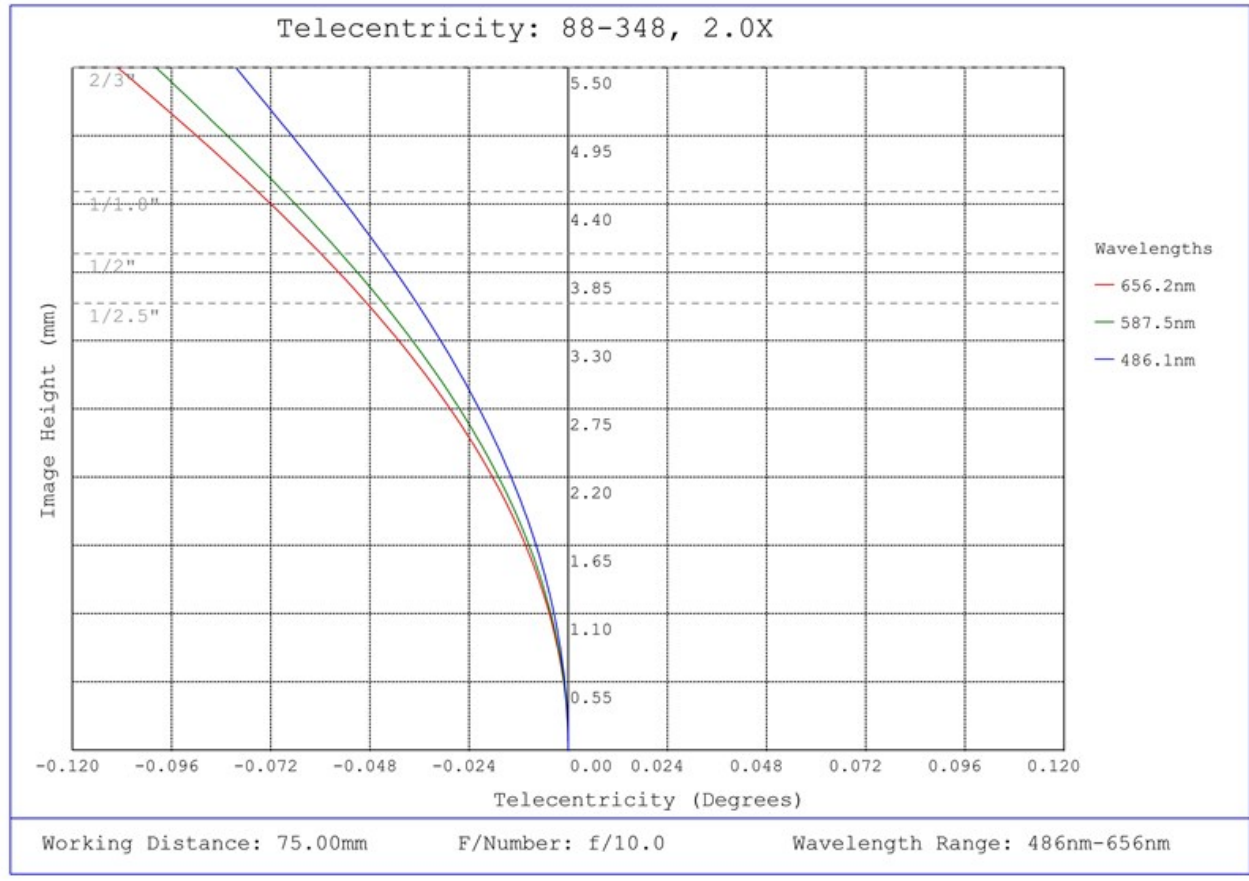
Stock No. of Mounting Clamp:	#56-870 Sold Separately
Type:	Telecentric Lens
Style:	In-Line Illumination



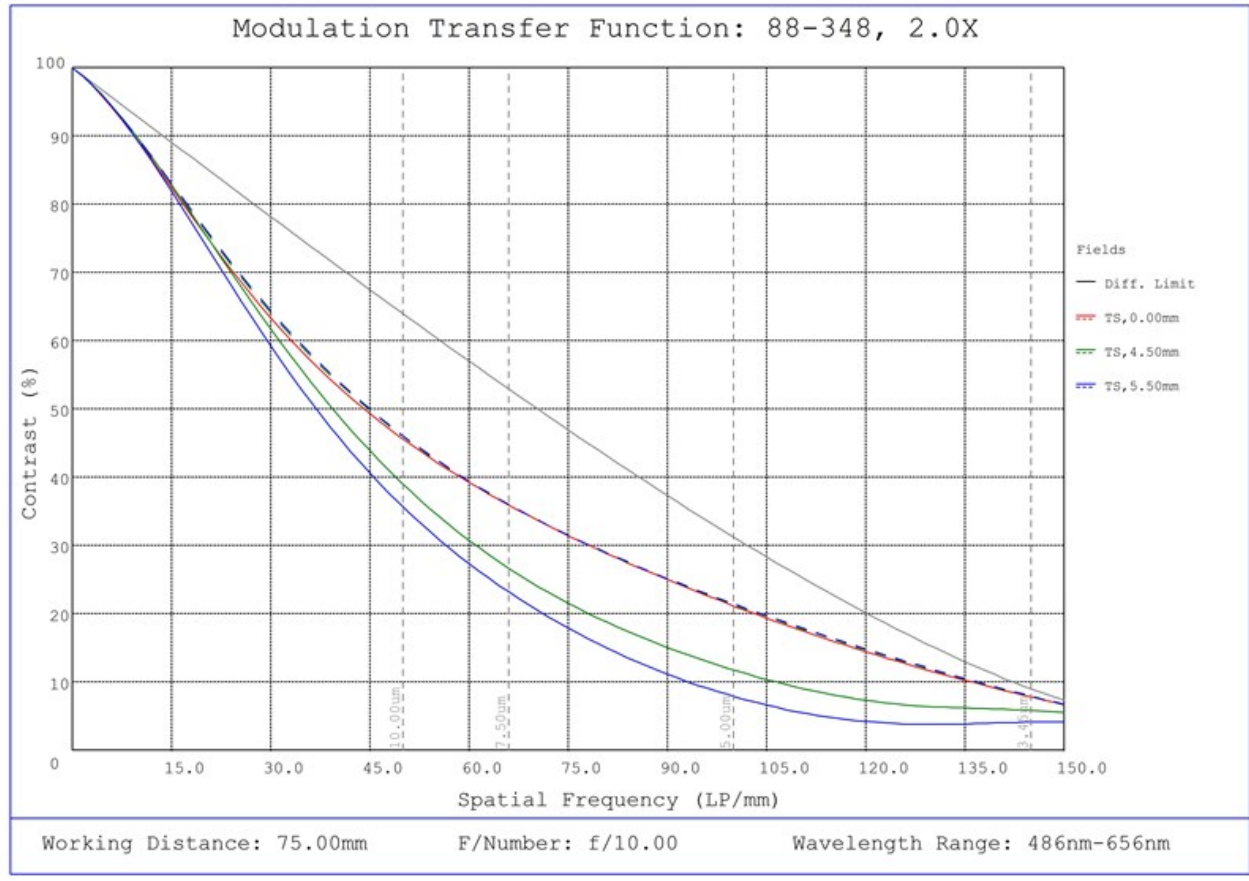
#88-348, 2.0X In-Line Illumination SilverTL™ Telecentric Lens, Distortion Plot



#88-348, 2.0X In-Line Illumination SilverTL™ Telecentric Lens, Relative Illumination Plot



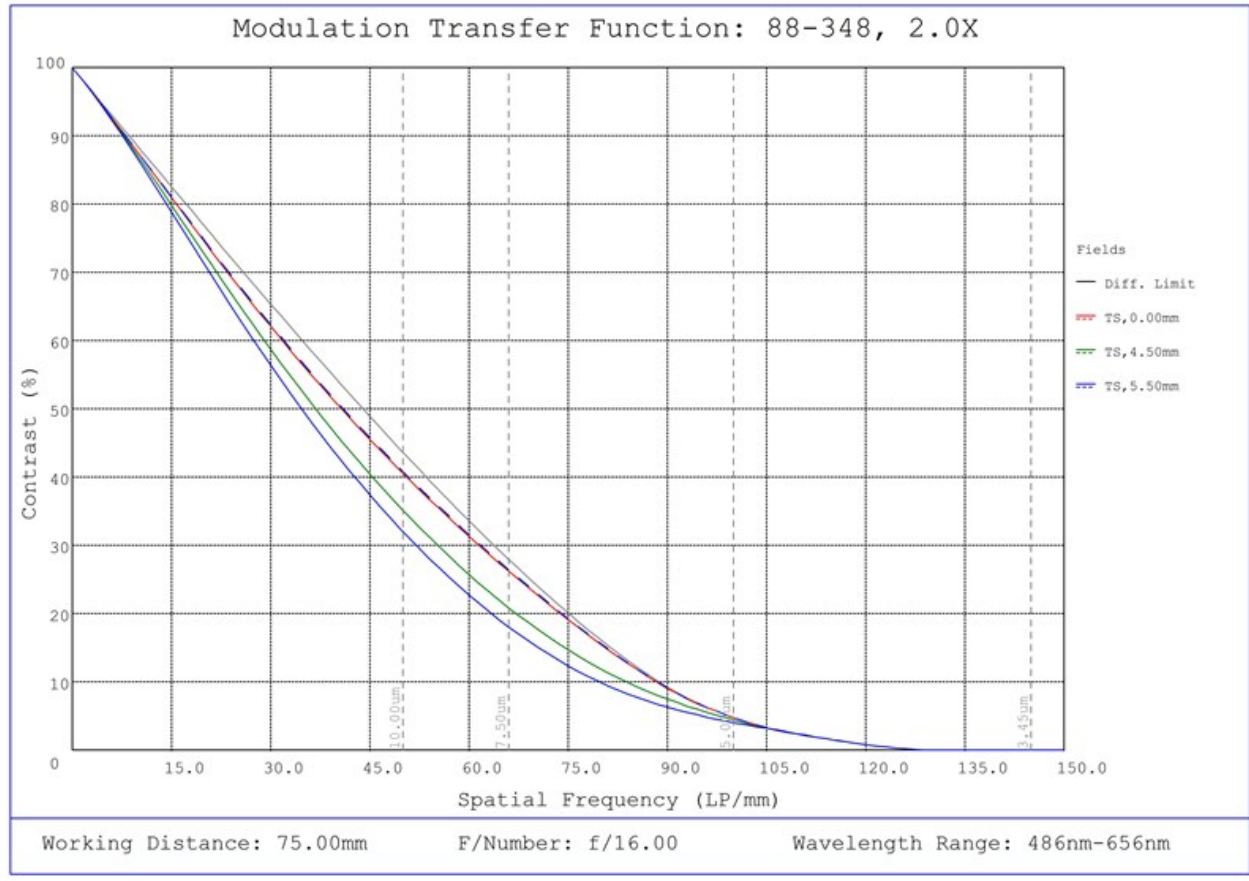
#88-348, 2.0X In-Line Illumination SilverTL™ Telecentric Lens, Telecentricity Plot



#88-348, 2.0X In-Line Illumination SilverTL™ Telecentric Lens, Modulated Transfer Function (MTF) Plot, 75mm Working Distance, f10



#88-348, 2.0X In-Line Illumination SilverTL™ Telecentric Lens, Depth of Field Plot, 75mm Working Distance, f10



#88-348, 2.0X In-Line Illumination SilverTL™ Telecentric Lens, Modulated Transfer Function (MTF) Plot, 75mm Working Distance, f16



#88-348, 2.0X In-Line Illumination SilverTL™ Telecentric Lens, Depth of Field Plot, 75mm Working Distance, f16



September 08, 2023

To Whom It May Concern,

This document certifies that the product stated below has been reviewed as requested by Edmund Optics:

<i>Stock No.</i>	<i>Description</i>
88-348	2.0X In-Line Illumination SilverTL™ Telecentric Lens

This item is EU RoHS (2015/863/EU) compliant without the use of exemptions.

This certification means that:

- EO's suppliers have confirmed the material composition of this product.
- EO has implemented rigorous procedures to document this compliance.
- The information provided may, or may not, be based upon actual test data, or on information from our Vendors, Raw Material Suppliers or Subcontractors.



Jay Budd, Director of Corporate Compliance
September 08, 2023

Edmund Optics Inc. - 101 E Gloucester Pike, Barrington, NJ 08007 | 1-800-363-1992 | Compliance@edmundoptics.com



September 08, 2023

To Whom It May Concern,

This document certifies that the product stated below has been reviewed as requested by Edmund Optics:

<i>Stock No.</i>	<i>Description</i>
88-348	2.0X In-Line Illumination SilverTL™ Telecentric Lens

This item does not contain any of the substances listed on the Reach SVHC list as of 10 June 2022 in quantities exceeding 0.1% weight by weight.

Please note the following:

- Entry 11 of Annex V of the REACH regulation as amended by regulation 987/2008, exempts “non-hazardous” glass components from registration.
- Items considered to be packing materials and which do not form part of, or are not required for the operation of, the product, are not considered to be within scope of this declaration.
- EO does not routinely analyze products for substances not purposely added or specified within the design specifications, drawings and assembly procedures.

This certification means that:

- EO's suppliers have confirmed the material composition of this product.
- EO has implemented rigorous procedures to document this compliance.
- The information provided may, or may not, be based upon actual test data, or on information from our Vendors, Raw Material Suppliers or Subcontractors.



Jay Budd, Director of Corporate Compliance
September 08, 2023

Edmund Optics Inc. - 101 E Gloucester Pike, Barrington, NJ 08007 | 1-800-363-1992 | Compliance@edmundoptics.com



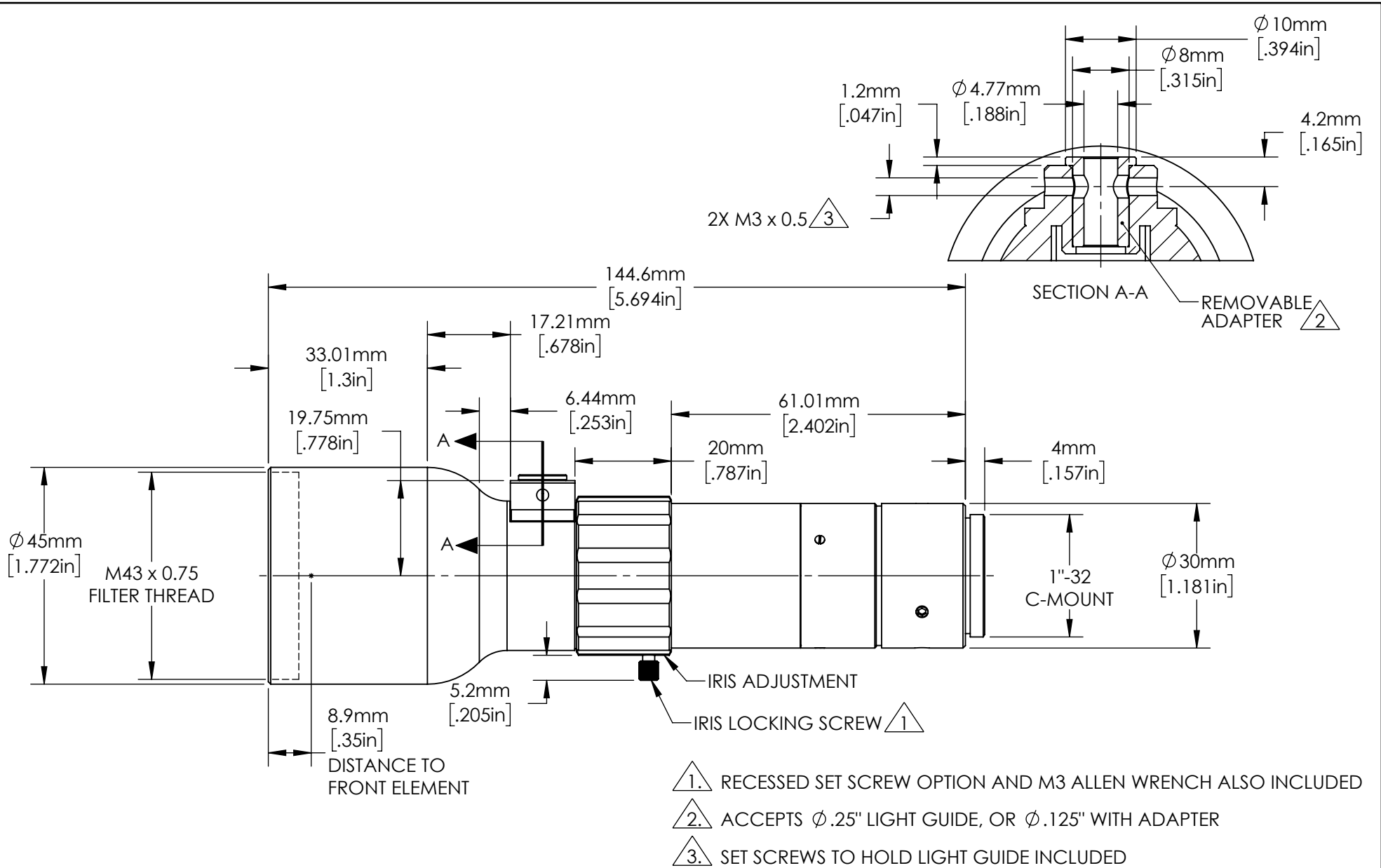
September 08, 2023

<i>Stock No.</i>	<i>Description</i>
88-348	2.0X In-Line Illumination SilverTL™ Telecentric Lens

Edmund Optics certifies that all articles included in this shipment are in compliance with the terms and conditions of this order. The company also certifies that the articles included in this shipment are in accordance to all agreed upon specifications and quality assurance provisions. Please call 1-800-363-1992 should any questions arise from this shipment.



Jeff Harvey- EVP of Operations



**FOR INFORMATION ONLY:
DO NOT MANUFACTURE
PARTS TO THIS DRAWING**

SPECIFICATIONS SUBJECT TO CHANGE WITHOUT NOTICE. DIMENSIONS ARE FOR REFERENCE ONLY. FOR DETAILED SPECIFICATIONS, PLEASE REFER TO THE SPEC SHEET.

Edmund Optics®

TITLE	2.0X In-Line Illumination SilverTL™ Telecentric Lens	
DWG NO	88348	SHEET 1 OF 1

