

1stVision Inc.

PRECISION MACHINE VISION LENS

LE-MV3-814

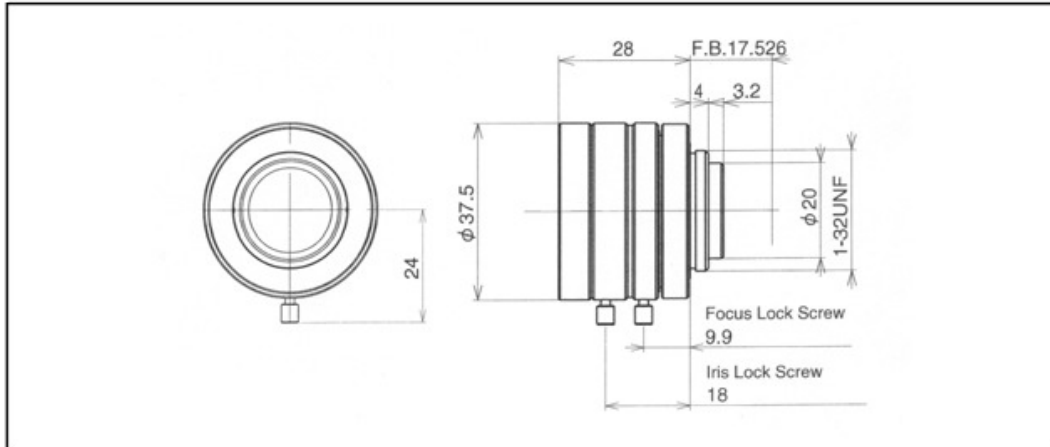


Image Format:	2/3-inch
Focal Length:	8mm
Relative Aperture:	F = 1: 1.4
Iris Range:	1.4 - 22
Angular Field of View:	Horizontal: 56.7°
	Vertical: 43.8°
	Center : 120 lp/mm
Resolution:	Corner : 100 lp/mm
	Near -1.24%
Distortion:	Far -0.48%
MOD (Minimum Object Distance):	0.1m
Exit Pupil:	-920mm
Back Focus:	10.7mm in air
Flange Back:	17.526mm
Operation:	Focus: Manual with lock screw
	Iris: Manual with lock screw
Lens Mount:	C-Mount Type
Filter Screw:	35.5mm, P = 0.5
Dimensions:	φ37.5 x 28mm
Weight:	83g
Operating Temperature:	-10 +50°C

Note : Angular field of view(H x V) is captured on the 2/3-inch image sensor at MOD.