

1stVision Inc.

PRECISION MACHINE VISION LENS

LE-MV3-2514

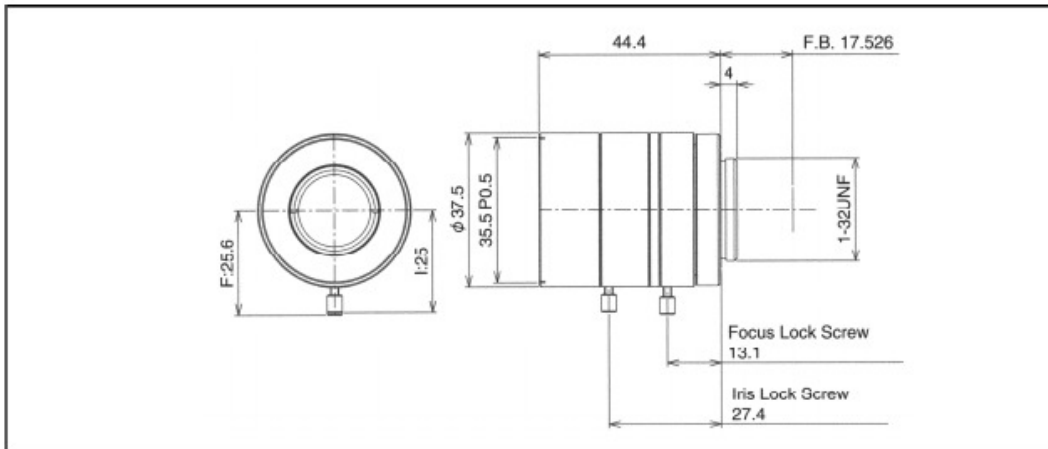


Image Format:	2/3-inch
Focal Length:	25mm
Relative Aperture:	F = 1: 1.4
Iris Range:	1.4 - close
Angular Field of View:	Horizontal: 20.0°
	Vertical: 15.0°
Resolution:	Center : 160 lp/mm or more
	Corner : 125 lp/mm or more
Distortion:	on 2/3" sensor : -0.02%(0.2m)
MOD (Minimum Object Distance):	0.2m
Back Focus:	14.01mm in air
Flange Back:	17.526mm
Operation:	Focus: Manual with lock screw
	Iris: Manual with lock screw
Lens Mount:	C-Mount Type
Filter Screw:	35.5mm, P = 0.5
Dimensions:	φ37.5 x 44.4mm
Weight:	
Operating Temperature:	-10 ~ +50°C

Note : Angular field of view(H x V) is captured on the 2/3-inch image sensor at MOD.