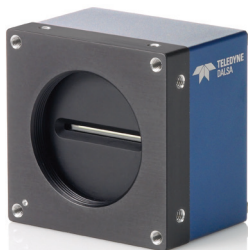


Linea Color™ 2K and 4K GigE Vision™ Color CMOS Line Scan Cameras

High Performance Color GigE Camera with TurboDrive™



The new Linea Color line scan cameras deliver the exceptional performance and features found in Teledyne DALSA's current lineup of high-end cameras at an unprecedented price point.

Based on bilinear color CMOS technology, the Linea Color GigE cameras has a 2k or 4k, 7.04 μm x 7.04 μm pixel array, and a line rate up to 26 kHz. With excellent sensitivity and speed, Linea Color surpasses the requirements of demanding applications—such as food sorting, materials grading, web inspection, and general purpose machine vision.

The Linea Color cameras come complete with many attractive features, including configurable GPIO ports, Burst Mode and Meta Data per each line. The GigE models provide multiple ROI, and multiple user and calibration coefficients sets for various lighting conditions.

Our proprietary, patent pending, TurboDrive technology delivers high speed data transfer capability that breaks through the GigE limit. TurboDrive boosts data transfer speeds compared with standard GigE Vision speeds – with no loss of image quality.

Key Features

- Low cost
- Burst mode
- Compact
- Meta data per each line

Programmability

- Multiple Regions of Interest for calibration and data reduction
- 8 or 12 bit output, selectable
- Smart flat field and lens shading correction
- 4 programmable coefficient sets
- Configurable GPIO ports, timers and counters

Typical Applications

- Automated optical inspection
- High performance sorting systems
- Materials grading
- Web inspection
- General purpose machine vision

Regulatory Compliance

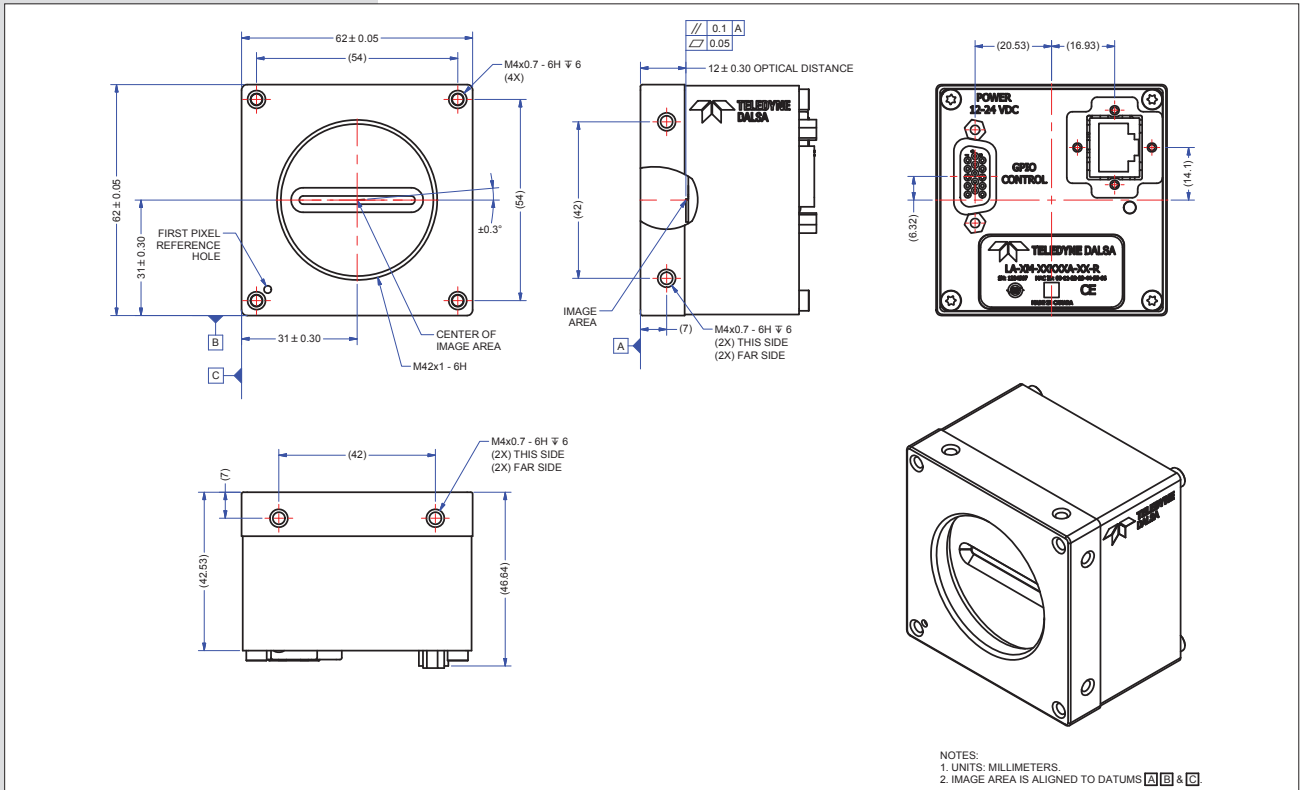
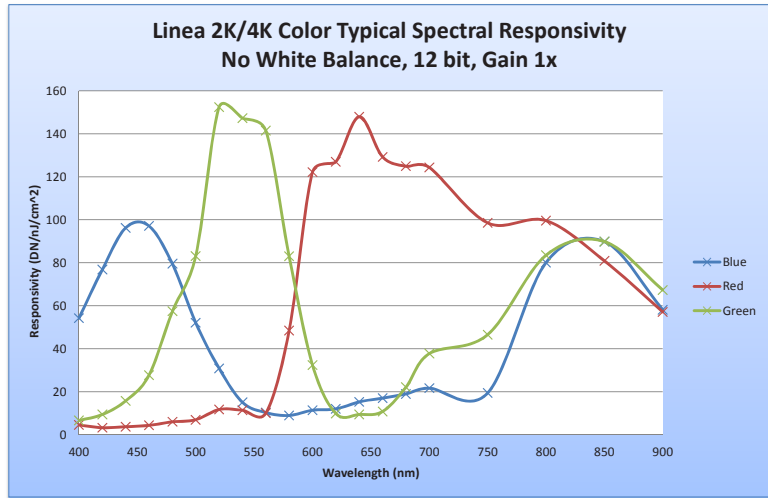
- CE, FCC and RoHS

Specifications

| | |
|--------------------|---|
| Resolution | 2048 x 2 or 4096 x 2 pixels |
| Line Rate | Up to 26 kHz (without TurboDrive) |
| Pixel Size | 7.04 μm x 7.04 μm |
| Data Format | 8 or 12 bit selectable |
| Output | Gigabit Ethernet |
| Lens Mount | M42 x 1, C and F-mount adapters available |
| Responsivity | See graph |
| Dynamic Range | > 60 dB |
| Nominal Gain Range | 1x to 12.5x |
| Size | 62 mm x 62 mm x 46.7 mm |
| Mass | < 280 g |
| Operating Temp | 0 °C to 65 °C (front plate) |
| Power | 12 V to 24 V DC, HD15 connector (shared with I / O) |
| Power Dissipation | < 8 W |
| I / O | HD15 connector |
| Software Platform | GigE Vision v1.2 compliant Teledyne DALSA Sapera LT or 3rd party GenICam™ compliant SDK |

| Models | | | |
|-------------------|------------|---------------------|---|
| Part Number | Resolution | Maximum Line Rates* | Pixel Size |
| LA-GC-02K05B-00-R | 2048 x 2 | 26 kHz, standard | 7.04 μm x 7.04 μm |
| LA-GC-04K05B-00-R | 4096 x 2 | 13 kHz, standard | 7.04 μm x 7.04 μm |

Linea Color™ 2K and 4K GigE Vision™ CMOS Line Scan Cameras



www.teledynedalsa.com

Americas

Boston, USA
+1 978-670-2000
sales.americas@teledynedalsa.com

Europe

Krailling, Germany
+49 89-89-54-57-3-80
sales.europe@teledynedalsa.com

Asia Pacific

Tokyo, Japan
+81 3-5960-6353
sales.asia@teledynedalsa.com

Shanghai, China
+86 21-6427-9081

sales.asia@teledynedalsa.com