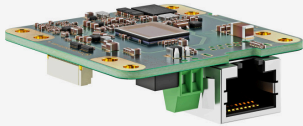
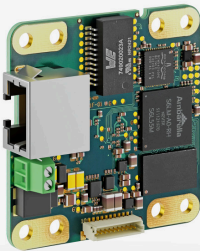
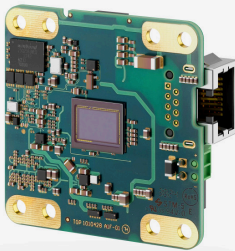


In series

The model is in series and available for the long term.



Specification

Streaming

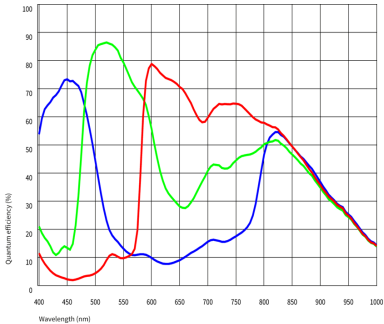
Streams	2x RTSP 1x HTTP
Resolution	1920x1080 @ 30 fps 1440x1080 @ 30 fps 1280x720 @ 30 fps 640x480 @ 30 fps
Compression	MJPEG H.264

Event Recorder

Recordings	
Recording duration (maximum)	120 s
Pre-event time (maximum)	60 s
Post-event time (maximum)	60 s
Event trigger	Hardware Input WebCockpit REST-API

Sensor

Sensor type	CMOS Color
Shutter	Rolling shutter
Sensor characteristic	Linear
Readout mode	-
Pixel Class	8 MP
Resolution	8.39 Mpix
Resolution (h x v)	3856 x 2176 Pixel
Aspect ratio	16:9
ADC	12 bit
Color depth (camera)	8 bit
Optical sensor class	1/1.8"
Optical Size	7.712 mm x 4.352 mm
Optical sensor diagonal	8.86 mm (1/1.81")
Pixel size	2 µm
Manufacturer	Sony
Sensor Model	IMX678-AAQR1-C



Model

Exposure time (minimum - maximum)	0.031 ms - 33.333 ms
Power consumption	3.7 W - 4 W

Ambient conditions

For PCB versions, refer to the separate hints in the respective documentation.

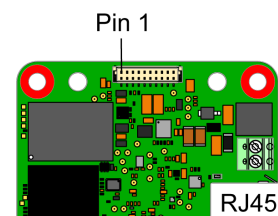
Allowed device temperature during operation	0 °C - 70 °C / 32 °F - 158 °F
Allowed ambient temperature during operation	0 °C - 30 °C / 32 °F - 86 °F
Allowed ambient temperature during storage	-20 °C - 60 °C / -4 °F - 140 °F
Humidity (relative, non-condensing)	20 % - 80 %

Connectors

Interface connector	GigE RJ45
I/O connector	10-pin Wuerth connector (WR-WTB 1.00 mm)
Power supply	12 V - 24 V

Pin assignment I/O connector

1	Power supply (VCC) 12-24 V
2	Power supply, ground
3	General Purpose I/O (GPIO) 2, 3.3 V
4	General Purpose I/O (GPIO) 1, 3.3 V
5	Reset (-) [GND]
6	Reset (+)
7	Trigger input without optocoupler 3.3 V
8	Flash output without optocoupler 3.3 V
9	Ground (GND)
10	Voltage output 3.3 V, max. 300 mA



Design

Lens Mount	-
IP code	-
Dimensions H/W/L	45.0 mm x 45.0 mm x 15.0 mm
Mass	15 g
Housing material	Plastic

Features

List of on-camera image pre-processing features.

All features of the table are available via our IDS peak software for image pre-processing on the host computer (sensor model dependent).

Image Adjustments

Auto exposure	✓
Auto gain	✓
Auto whitebalance	✓
Color correction	-
Gamma	-
LUT	-
Mirror/flip	X/Y

Others

Firmware update	✓
1st supported firmware version	1.1.0