



# HR Camera Link

hr25CCL

## General

Model	hr25CCL
Product code	F004052
Product series	HR Camera Link
Status	Available

## Sensor

Sensor type	Area scan
Chroma	Color
Spectrum	Visible
Spectral range	400 nm to 1000 nm
Resolution	5,120 × 5,120 (25.00 MP)
Sensor model	ON Semi PYTHON 25K
Sensor architecture (material)	cmos
Shutter type(s)	global-shutter
Sensor size	23.04 × 23.04 mm (32.58 mm, 32.58mm (APS-H))
Pixel size	4.50 μm × 4.50 μm

## Pixel formats

Sensor bit depth	8-Bit,10-Bit
RGB pixel formats	bayer8, bayer10

## Timing and gain

Max. frame rate	31.8 fps
Exposure time	21 μs to 60 s
Gain	0.0 dB to 18.0 dB

## I/Os and power

Non-isolated lines	0 x LVDS input, 0 x LVDS output, 0 x TTL input, 0 x TTL output, 2 x 24V input, 4 x Open drain output,
Specific non-isolated lines	1 x RS232 input, 1 x RS232 output, 0 x RS422 input, 0 x RS422 output,
Opto-isolated lines	1 x Optical isolated input, 0 x Optical isolated input,
Power supply	10 to 25VDC
Power consumption	External: 10 W (typical)

## Operating conditions

Operating temperature (housing)	-10 °C to 65 °C
---------------------------------	-----------------

## Mechanical properties

Body dimensions (L x W x H in mm)	56 × 70 × 70
IP class	IP40
Lens mount(s)	M58x0.75
Weight	420 g

## On-board memory and FPGA

Non-volatile memory (Flash)	32 MByte
-----------------------------	----------

## Interfaces

Digital interface	camera link 80-bit
Interface connector	SDR

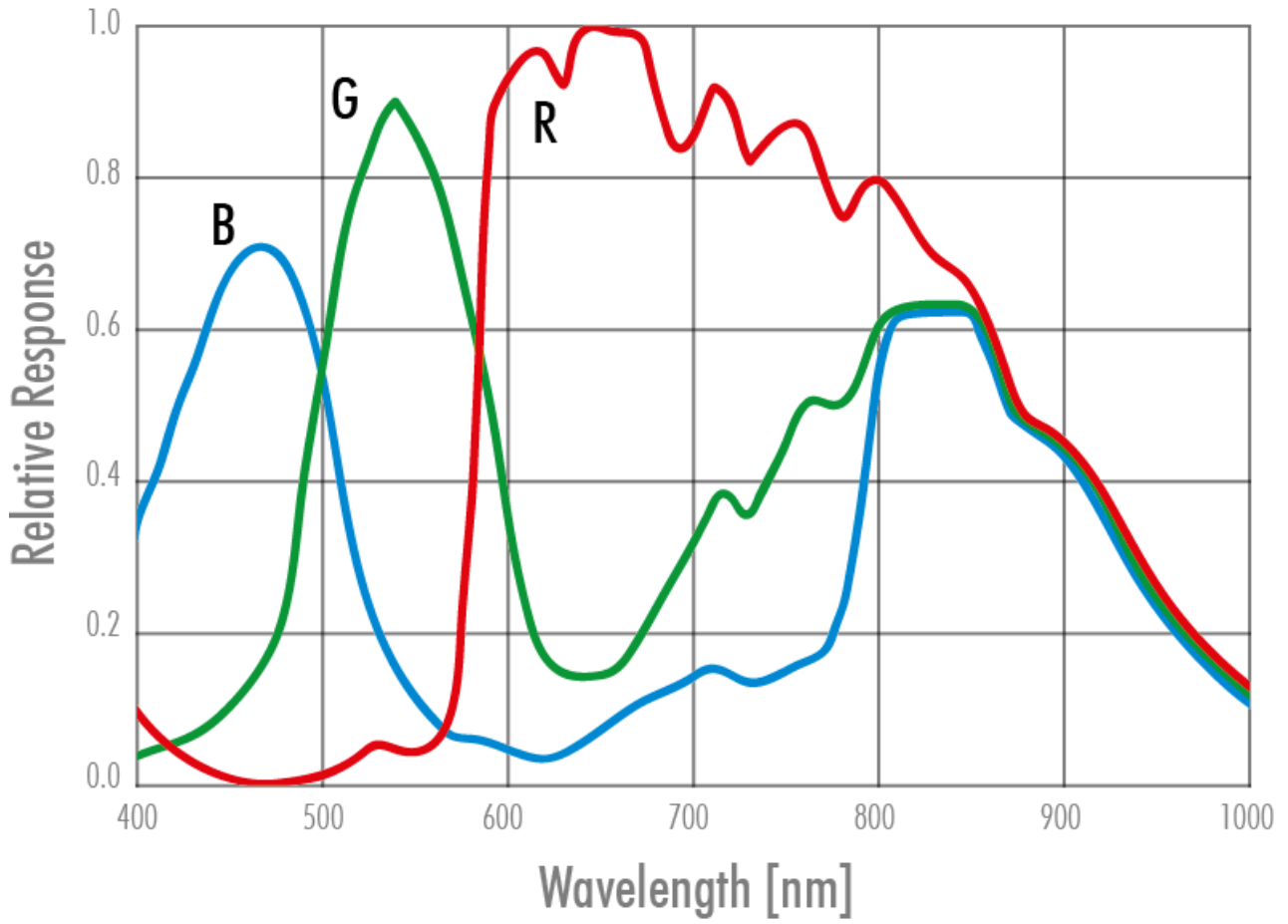
## FW features - image control

Exposure modes	Manual, Auto, External
Gain modes	Auto, Manual
White balance modes	auto, manual
Image control features	FW Features - Image Control

## FW features - camera control

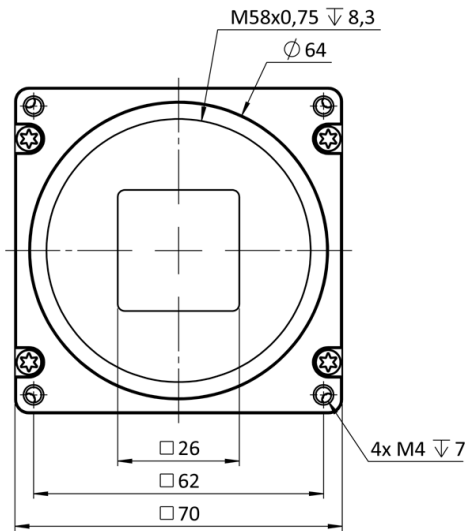
Trigger modes/sync	INTERNAL,SOFTWARE,EXTERNAL
Camera control features	User Sets, PWM(4), Sequencer,

Quantum Efficiency

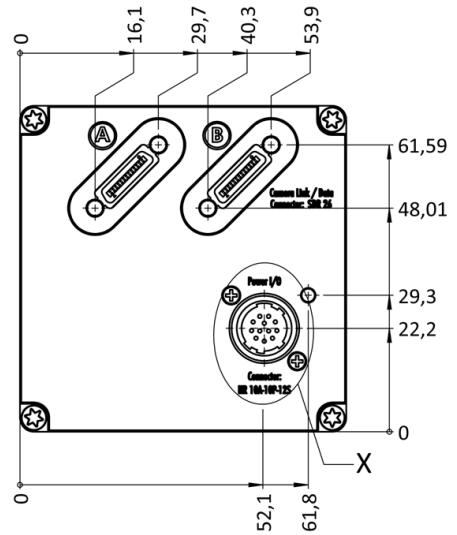


Technical Drawing

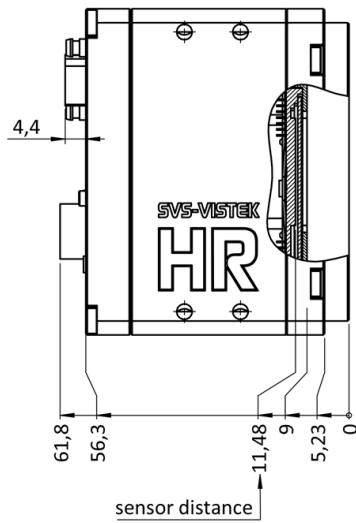
front view



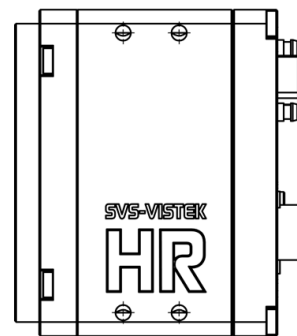
back view



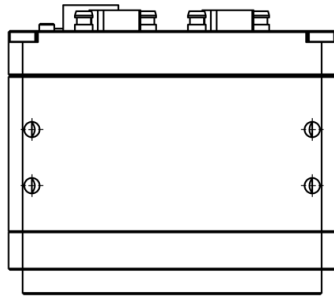
cross section



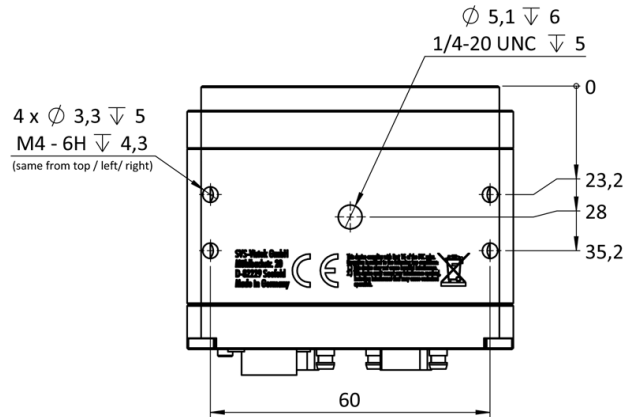
right view



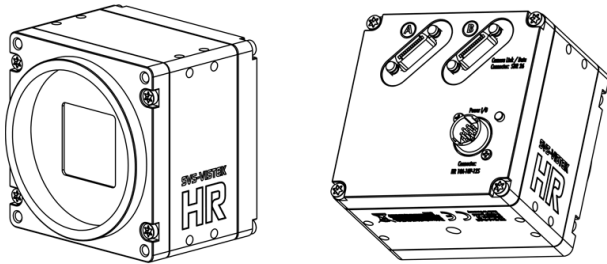
top view



bottom view



3D view



## I/O pin assignment



1	VIN - (GND)	7	OUT 1 (open drain)
2	VIN + (10V to 25V DC)	8	OUT 2 (open drain)
3	IN 4 (RXD RS232)	9	IN 3 + (opto In +)
4	OUT 4 (TXD RS232)	10	IN 3 - (opto In -)
5	IN 1 (0-24V)	11	OUT 3 (open drain)
6	IN 2 (0-24V)	12	OUT 0 (open drain)