

FXO 10GigE

fxo901CXGE



General

Model	fxo901CXGE
Product code	F002365
Product series	FXO 10GigE
Status	Available

Sensor

Sensor type	Area scan
Chroma	Color
Spectrum	Visible
Spectral range	400 nm to 1000 nm
Resolution	8,016 × 2,048 (16.40 MP)
Sensor model	Sony IMX901
Sensor architecture (material)	cmos
Shutter type(s)	global-shutter
Sensor size	21.96 × 5.61 mm (22.67 mm, 22.7mm (Type 1.4))
Pixel size	2.74 μm × 2.74 μm

Pixel formats

Sensor bit depth	8-Bit,12-Bit
RGB pixel formats	bayer8, bayer12

Timing and gain

Max. frame rate	74 fps
Exposure time	9 μs to 60 s
Gain	0.0 dB to 48.0 dB

I/Os and power

Non-isolated lines	0 x LVDS input, 0 x LVDS output, 0 x TTL input, 0 x TTL output, 2 x 24V input, 4 x Open drain output,
Specific non-isolated lines	1 x RS232 input, 1 x RS232 output, 0 x RS422 input, 0 x RS422 output,
Opto-isolated lines	1 x Optical isolated input, 0 x Optical isolated input,
Power supply	10 to 25VDC, Power over Ethernet
Power consumption	External: 11 W (typical)

Operating conditions

Operating temperature (housing)	-10 °C to 60 °C
---------------------------------	-----------------

Mechanical properties

Body dimensions (L x W x H in mm)	76 × 50 × 50
Filter/protection glass	None
IP class	IP30
Lens mount(s)	C-Mount
Weight	240 g

On-board memory and FPGA

Image buffer (RAM)	896 MByte
Non-volatile memory (Flash)	32 MByte

Interfaces

Digital interface	10gige
Interface connector	(RJ-45)

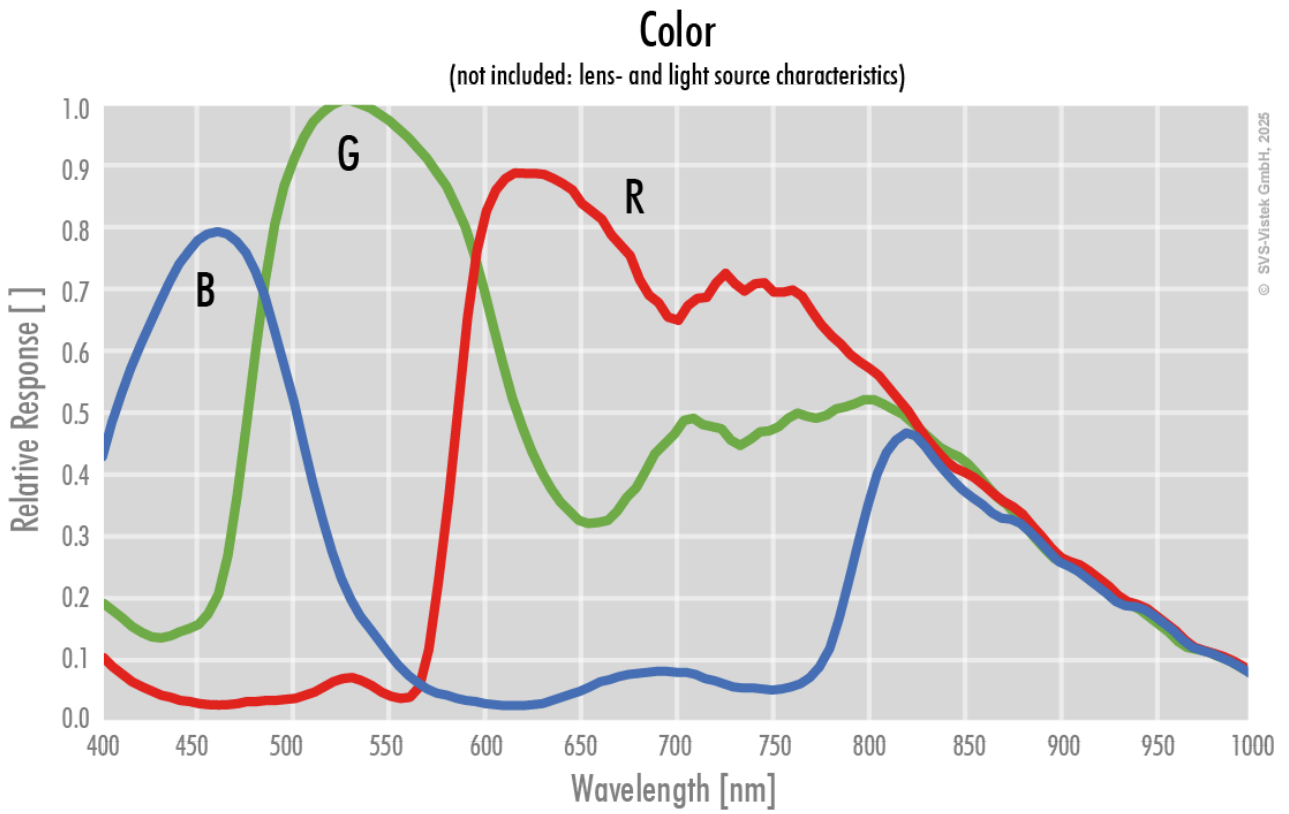
FW features - image control

Exposure modes	Manual, Auto, External
Gain modes	Auto, Manual
White balance modes	auto, manual
Image control features	FW Features - Image Control

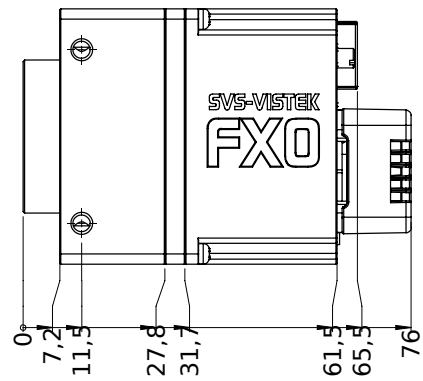
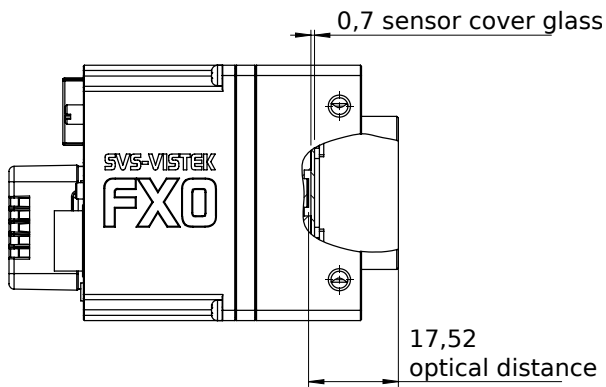
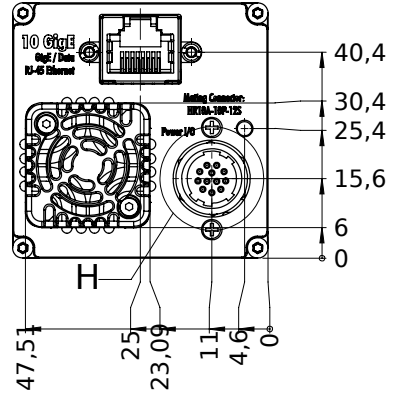
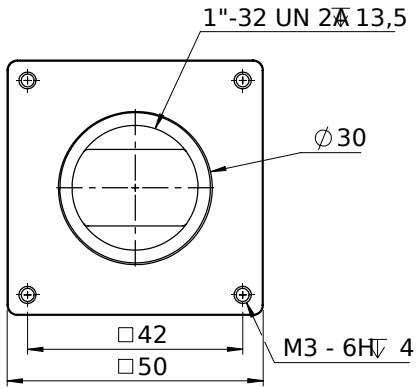
FW features - camera control

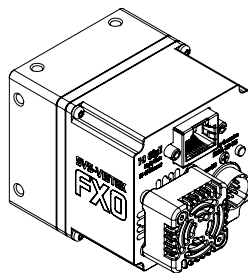
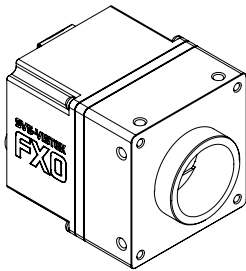
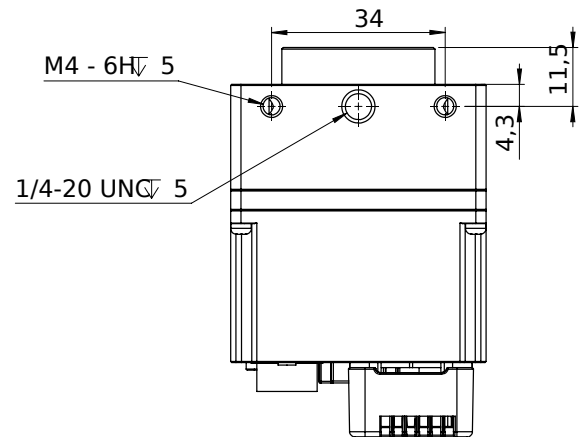
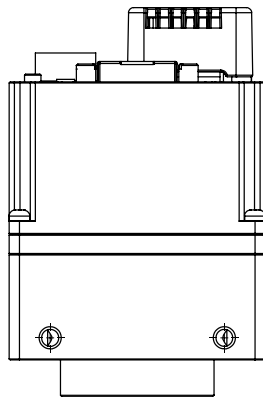
Trigger modes/sync	INTERNAL, SOFTWARE, EXTERNAL
Camera control features	PTP, User Sets, POE, PWM(4), Sequencer,

Quantum Efficiency

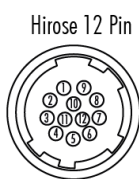


Technical Drawing





I/O pin assignment



1	VIN -	(GND)	7	OUT1	(open drain)
2	VIN +	(10V to 25V DC)	8	OUT2	(open drain)
3	IN4	(RXD RS232)	9	IN3 +	(opto In +)
4	OUT4	(TXD RS232)	10	IN3 -	(opto In -)
5	IN1	(0-24V)	11	OUT3	(open drain)
6	IN2	(0-24V)	12	OUT0	(open drain)