

FXO 10GigE

fxo530MXGE



Preliminary product information. Features and technical specifications are subject to change without notice.

General

| | |
|-----------------|------------------------------|
| Model: | fxo530MXGE |
| Product code: | F002443 |
| Product series: | FXO 10GigE |
| Status: | Prototype/engineering sample |

Sensor

| | |
|---------------------------------|--|
| Sensor type: | Area scan |
| Chroma: | Color |
| Spectrum: | Visible |
| Spectral range: | 400 nm to 1000 nm |
| Resolution: | 5,328 × 4,608 (24.60 MP) |
| Sensor model: | Sony IMX530 |
| Sensor architecture (material): | cmos |
| Shutter type(s): | global-shutter |
| Sensor size: | 14.6 × 12.63 mm (19.3 mm, 19.3mm (Type 1.2)) |
| Pixel size: | 2.74 μm × 2.74 μm |

Pixel formats

| | |
|--------------------|-----------------|
| Sensor bit depth: | 8-Bit,12-Bit |
| RGB pixel formats: | bayer8, bayer12 |

Timing and gain

| | |
|------------------|-------------------|
| Max. frame rate: | 47.2 fps |
| Exposure time: | 5 μ s to 60 s |
| Gain: | 0.0 dB to 48.0 dB |

I/Os and power

| | |
|------------------------------|---|
| Non-isolated lines: | 0 x LVDS input, 0 x LVDS output, 0 x TTL input, 0 x TTL output, 2 x 24V input, 4 x Open drain output, |
| Specific non-isolated lines: | 1 x RS232 input, 1 x RS232 output, 0 x RS422 input, 0 x RS422 output, |
| Opto-isolated lines: | 1 x Optical isolated input, 0 x Optical isolated input, |
| Power supply: | 10 to 25VDC |
| Power consumption: | External: 12 W (typical) |

Operating conditions

| | |
|----------------------------------|-----------------|
| Operating temperature (housing): | -10 °C to 60 °C |
|----------------------------------|-----------------|

Mechanical properties

| | |
|------------------------------------|--------------|
| Body dimensions (L x W x H in mm): | 76 × 50 × 50 |
| Filter/protection glass: | IR-Cut 680 |
| IP class: | IP30 |
| Lens mount(s): | C-Mount |
| Weight: | 240 g |

On-board memory and FPGA

| | |
|------------------------------|-----------|
| Image buffer (RAM): | 896 MByte |
| Non-volatile memory (Flash): | 32 MByte |

Interfaces

| | |
|----------------------|---------|
| Digital interface: | 10gige |
| Interface connector: | (RJ-45) |

FW features - image control

| | |
|-------------------------|-----------------------------|
| Exposure modes: | Manual, Auto, External |
| Gain modes: | Auto, Manual |
| White balance modes: | auto, manual |
| Image control features: | FW Features - Image Control |

FW features - camera control

Trigger modes/sync:

INTERNAL,SOFTWARE,EXTERNAL

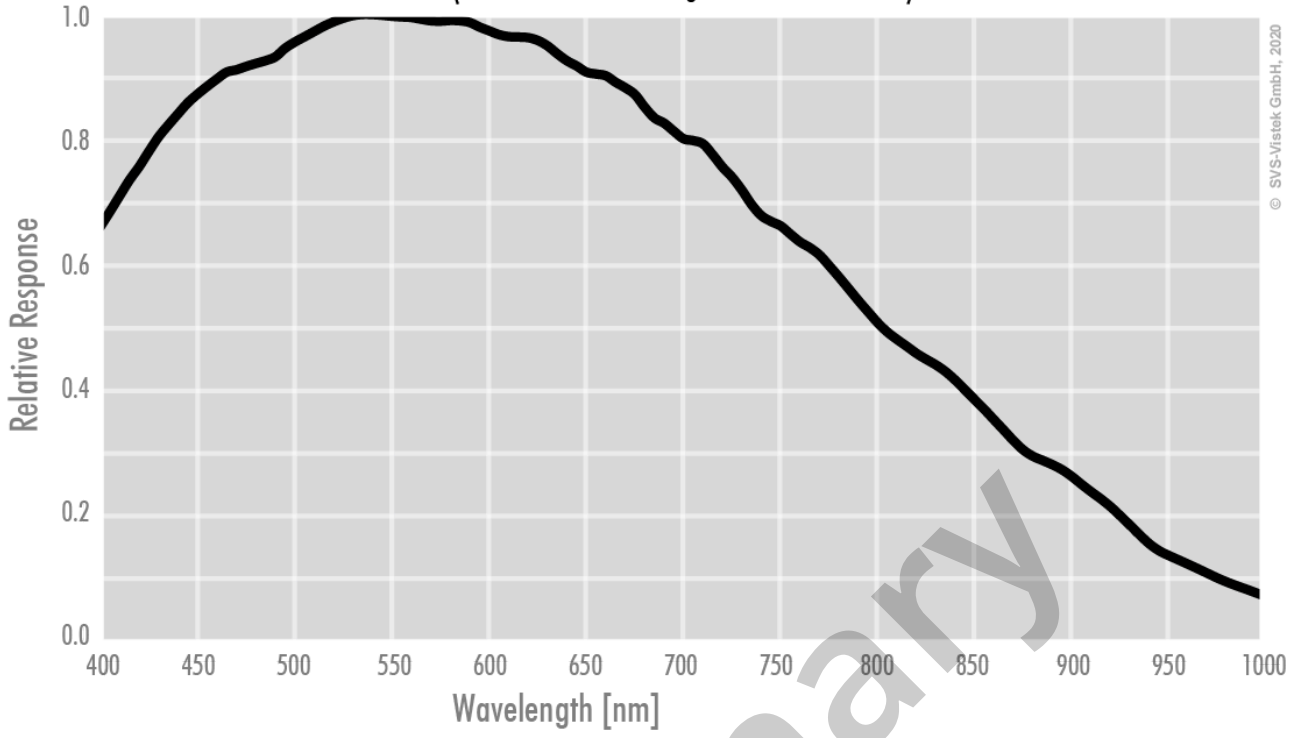
Camera control features:

PTP, RDMA support, User Sets, PWM(4), Sequencer,

preliminary

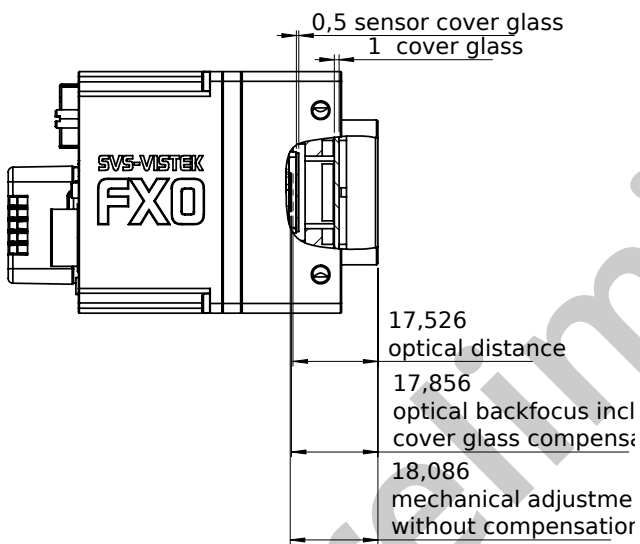
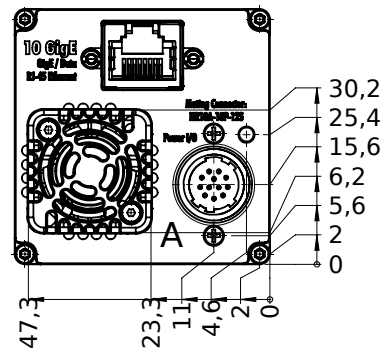
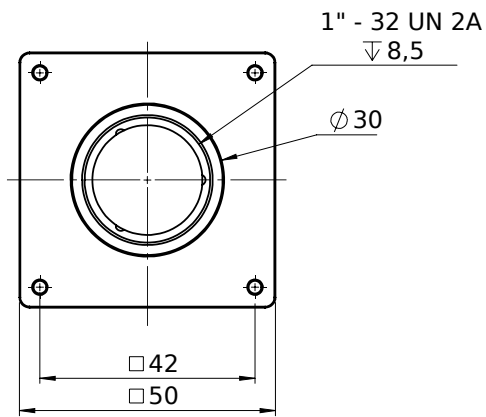
Monochrome

(not included: lens- and light source characteristics)

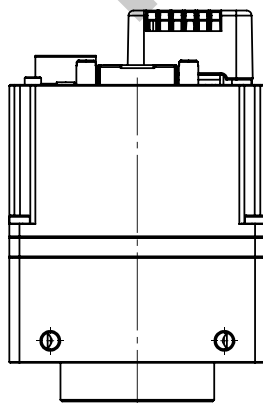
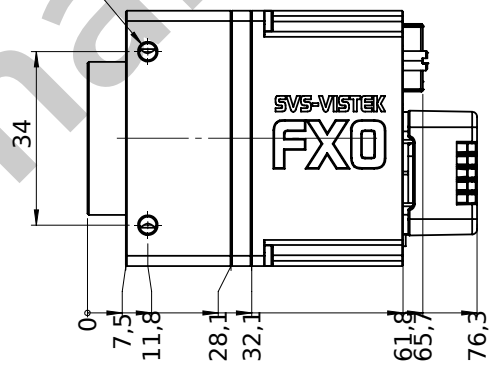


© SVS-Viatek GmbH, 2020

preliminary

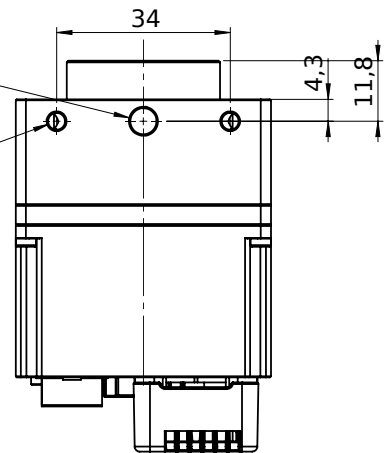


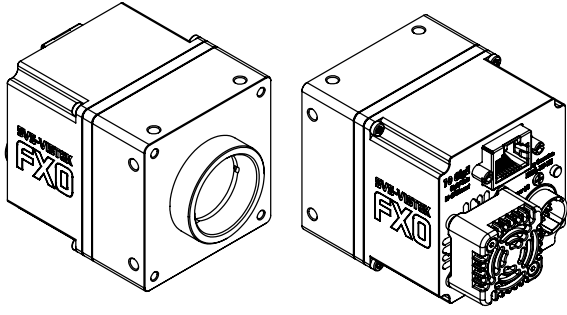
M4 - 6H ∇ 5
same from left



1/4 - 20 UNC
 ∇ 5,0

M4 - 6H ∇ 5
same from top





I/O pin assignment

Hirose 12 Pin



| | | | | | |
|---|------|-----------------|----|------|--------------|
| 1 | VIN- | (GND) | 7 | OUT1 | (open drain) |
| 2 | VIN+ | (10V to 25V DC) | 8 | OUT2 | (open drain) |
| 3 | IN4 | (RXD RS232) | 9 | IN3+ | (opto In+) |
| 4 | OUT4 | (TXD RS232) | 10 | IN3- | (opto In-) |
| 5 | IN1 | (0-24V) | 11 | OUT3 | (open drain) |
| 6 | IN2 | (0-24V) | 12 | OUT0 | (open drain) |

preliminary