

# Pulsar 710

## High Current Strobe Controller



- Aii** 100 Amps @ 100 Volts total output in strobed mode;  
8 Amps @ 24 Volts total output in constant mode.
- Aii** Provides fast rise times and high current pulses.

### Ordering Information

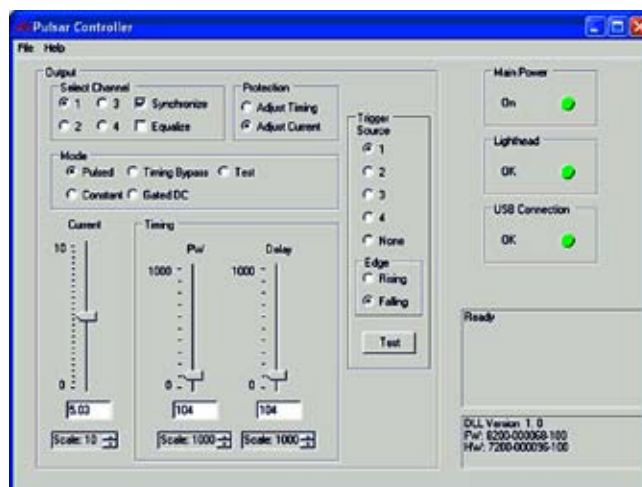
Standard Product:  
Shipped Next Day

**S710**

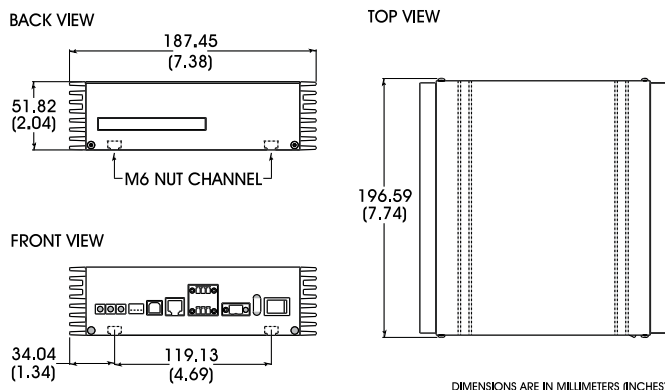
P/N: S710

SignaTech software enables the user to program all strobe controller current and timing parameters. Currents are programmable for each of four channels, and expressed in amps from 0-25. Timing parameters include pulse width, and post event delay time. All timing parameters are programmed in steps of 1 microsecond, up to a maximum of 1000.

### Signatech Controller Software



### Dimensional Information



Included in the package:

- 3 pin, trigger input connectors (2)
- 2 pin, power input connector & cable
- USB Cable
- Software CD
- Instruction Manual

Requires 24V DC Regulated Power Supply (not included)

### Additional Information

- 4 Channel output (independent current control on each output).
- Dual asynchronous triggering (non-differential mode).
- Multiple self test modes.

### Standard Product Information

Operating Temperature: 0-55° C



Meets CE standards