

DL2230

Diffuse Dome Light



- Aii** A modified, extremely efficient integrating light source
- Aii** Compact, space saving design - ideally suited for inspecting small, specular objects

Ordering Information

Standard Product:
Shipped Next Day

DL2230

P/N: DL2230-660
Configured for use with Ai
Power Supply

Standard Product Variation:
Shipped Within Two Weeks

	Spectral wavelength	Optional power Compatibility
DL2230 -	XXX	XX
	(UV) 395*	IC
	(blue) 470 [†]	12
	(green) 520 [†]	24
	(yellow) 590	
	(orange) 625	
	(red) 660	
	(infra-red) 880	
	(White) WHI [†]	

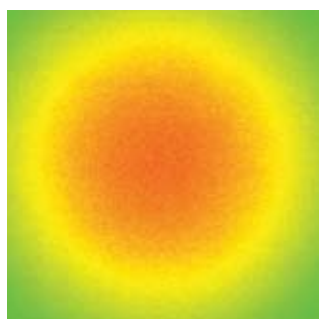
Optimal working distance:
12.7mm (.5")
Effective Working Range:
12.7-50mm (.5"-2")

*UV LEDs have a considerably shorter half-life than other LEDs (<1000hrs). For this reason Ai recommends these LEDs be used in strobe mode only. For applications requiring continuous 24v power, contact Ai for assistance.

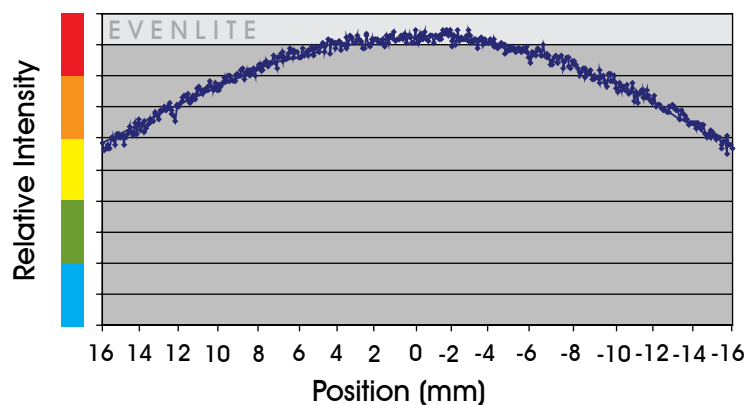
[†] Not available in 12v

Light Consistency Information

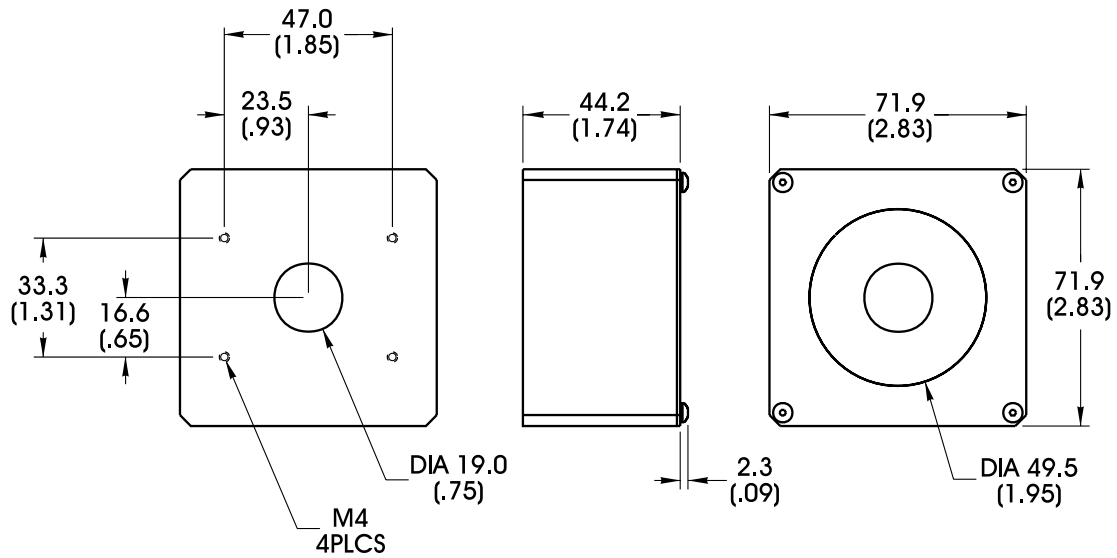
Intensity Distribution



Intensity Cross Section



Dimensional Information



DIMENSIONS ARE IN MILLIMETERS (INCHES)

Standard Variation Current Specifications

	blue	green	yellow	orange	red	infra-red	white	RGB	
@12	N/A	N/A	120	120	120	120	N/A	N/A	mA
@24	120	120	60	60	60	60	120	N/A	mA
Ai	240	240	120	120	120	120	240	N/A	

General Specifications

Weight:	438 g (15.4 oz)
Finish:	Black Anodized
Operating Temperature:	0-60°C
Meets Specifications:	CE, RoHS

Standard Product Information

Red	Max. Illumination	Irradiance (mW/cm ²)	Illuminance (Lux)
	Working Distance: 12.5mm	.99	790
	Working Distance: 25.4mm	.59	460
	Lifetime	50,000 hrs	
White	Max. Illumination	Irradiance (mW/cm ²)	Illuminance (Lux)
	Working Distance: 12.5mm	1.34	490
	Working Distance: 25.4mm	.81	290
	Lifetime	10,000 hrs	

Additional Information