

AL4424

4" Broad Area Linear Array



- Ai** Provides very even illumination along the 100mm length of the light, with controlled "fall off" in the transverse direction.
- Ai** Designed to provide low angle of incidence illumination over a long, wide area.

Ordering Information

Standard Product:
Shipped Next Day

AL4424

P/N: SL4424-660
Configured for use with Ai
Power Supply

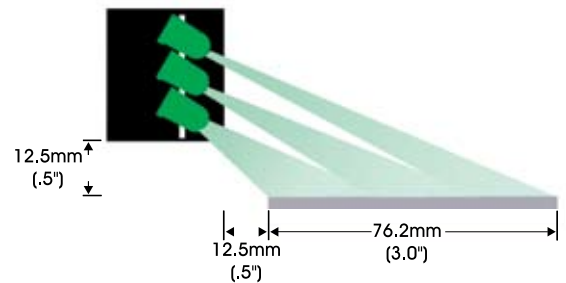
Standard Product Variation:
Shipped Within Two Weeks

	Spectral wavelength		Optional power Compatibility
AL4424	-	XXX	XX
(UV)	395 *		IC
(blue)	470 †		12
(green)	520 †		24
(yellow)	590		
(orange)	625		
(red)	660		
(infra-red)	880		
(white)	WHI †		

*UV LEDs have a considerably shorter half-life than other LEDs (<1000hrs). For this reason Ai recommends these LEDs be used in strobe mode only. For applications requiring continuous 24v power, contact Ai for assistance.

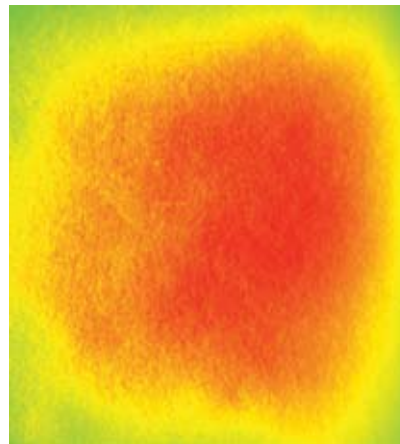
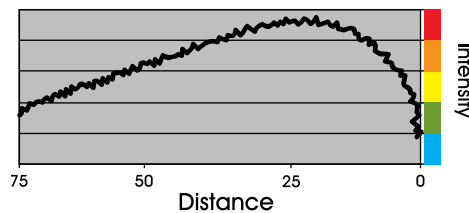
† Not available in 12v

Light Set Up Diagram



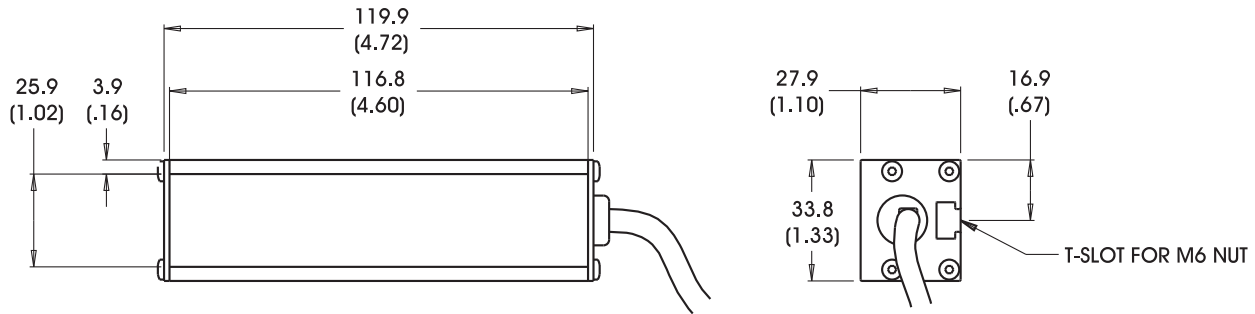
Light Consistency Information

Intensity Distribution



Intensity Cross Section

Dimensional Information



Cable Length: 1.5 Meter (4.9')

DIMENSIONS ARE IN MILLIMETERS (INCHES)

Standard Variation Current Specifications

	blue	green	yellow	orange	red	infra-red	white	RGB	
@12	N/A	N/A	80	80	120	120	N/A	N/A	mA
@24	80	80	40	40	60	60	80	N/A	mA
Ai	80	80	80	80	120	120	80	N/A	mA

General Specifications

Weight:	227 g (.51lb)
Finish:	Black Anodized
Operating Temperature:	0-60°C
Meets Specifications:	CE, RoHS

Standard Product Information

Red	Max. Illumination	Irradiance (mW/cm ²)	Illuminance (Lux)
	Working Distance: 1.5"/.5"	.26	N/A
	Working Distance: 3.0"	.95	N/A
	Lifetime	50,000 hrs	
White	Max. Illumination	Irradiance (mW/cm ²)	Illuminance (Lux)
	Working Distance: 2.0"/.5"	.61	2,000
	Working Distance: 3.0"	1.47	4,500
	Lifetime	10,000 hrs	

Additional Information

802.767.3830