

TELECENTRIC LENS FOR LINEAR DETECTORS



WWW.OPTO-ENGINEERING.COM

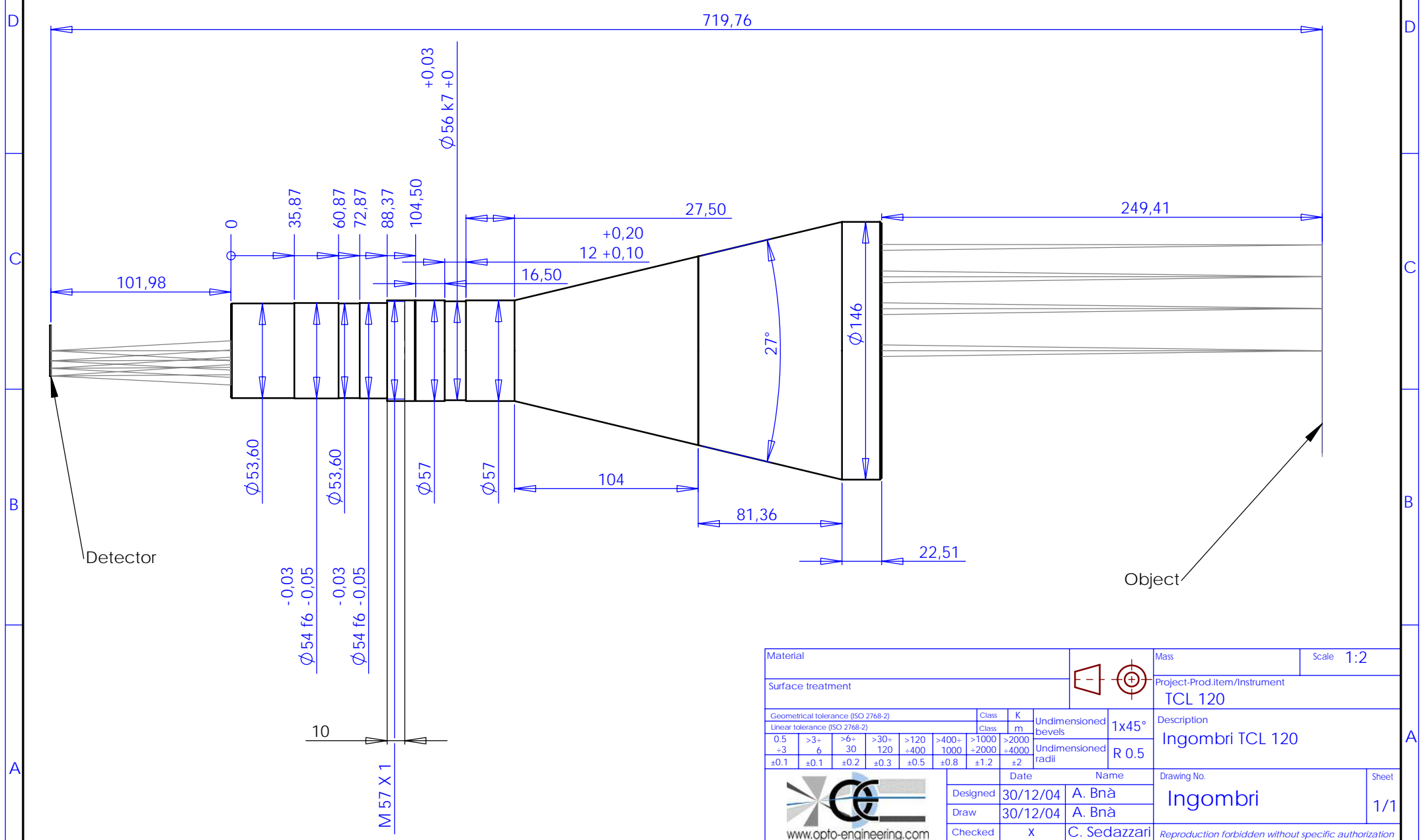


Model:	TCL 120		
Magnification (X):	0,24		
Object Field (mm):	4k x 7 μ m (28,7 mm):	120,0	
	2k x 10 μ m (20,5 mm):	85,7	
	2k x 7 μ m (14,3 mm):	59,8	
	1k x 10 μ m (10,2 mm):	42,7	
Working Distance (mm):	250,0 +/- 8		
Working F-number:	9		
MTF @70 lp/mm (%):	>30		
Field Depth (mm):	15,0	@	F/ 9
Image side N.A.:	0,055		
Object side N.A.:	0,013		
Telecentricity (degree):	<0,1		
Distortion (%):	<0,15		
Mount:	F or custom		
Length (mm):	460		
Maximum external diameter (mm):	146		
Weigh (g):	3900		

NOTES:

- 1) The inner aperture diaphragm can be supplied on request with smaller apertures in order to achieve a larger Field Depth
- 2) Tailored diffusive Ring Light available on request
- 3) Custom flanges and mechanical interfaces can be provided on request
- 4) Can be coupled to a collimated light illuminator like LT CL 96

Rev No.	Description	Date	Name
A	New Part	30/12/04	A. Bnà



Material	Surface treatment	Geometrical tolerance (ISO 2768-2)	Class	K	Undimensioned bevels	1x45°	Description	Mass	Scale
		Linear tolerance (ISO 2768-2)	Class	m	Undimensioned radii	R 0.5	Ingombri TCL 120	TCL 120	1:2
		0.5	>3-	>6-	>30-	>120	>400-	>1000	>2000
		-3	6	30	120	400	1000	2000	4000
		±0.1	±0.1	±0.2	±0.3	±0.5	±0.8	±1.2	±2
		Date		Name		Drawing No.		Sheet	
		Designed 30/12/04		A. Bnà		Ingombri		1/1	
		Draw 30/12/04		A. Bnà		C. Sedazzari		Reproduction forbidden without specific authorization	
		Checked X		C. Sedazzari		www.opto-engineering.com		OPTO ENGINEERING S.r.l. - 46100 Mantova Italy - Via Cremona, 28 - Tel/fax +39 0376 229585 - e-mail: info@opto-engineering.it - http://www.opto-engineering.com	