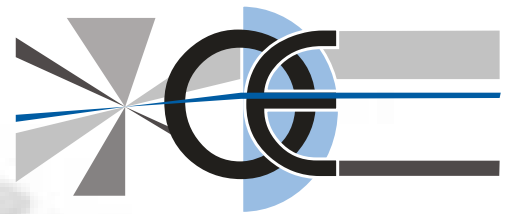


BI-TELECENTRIC LENS FOR 2/3" TO 1/4" DETECTORS



WWW.OPTO-ENGINEERING.COM

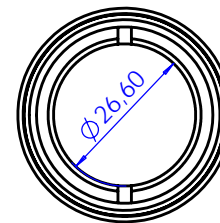
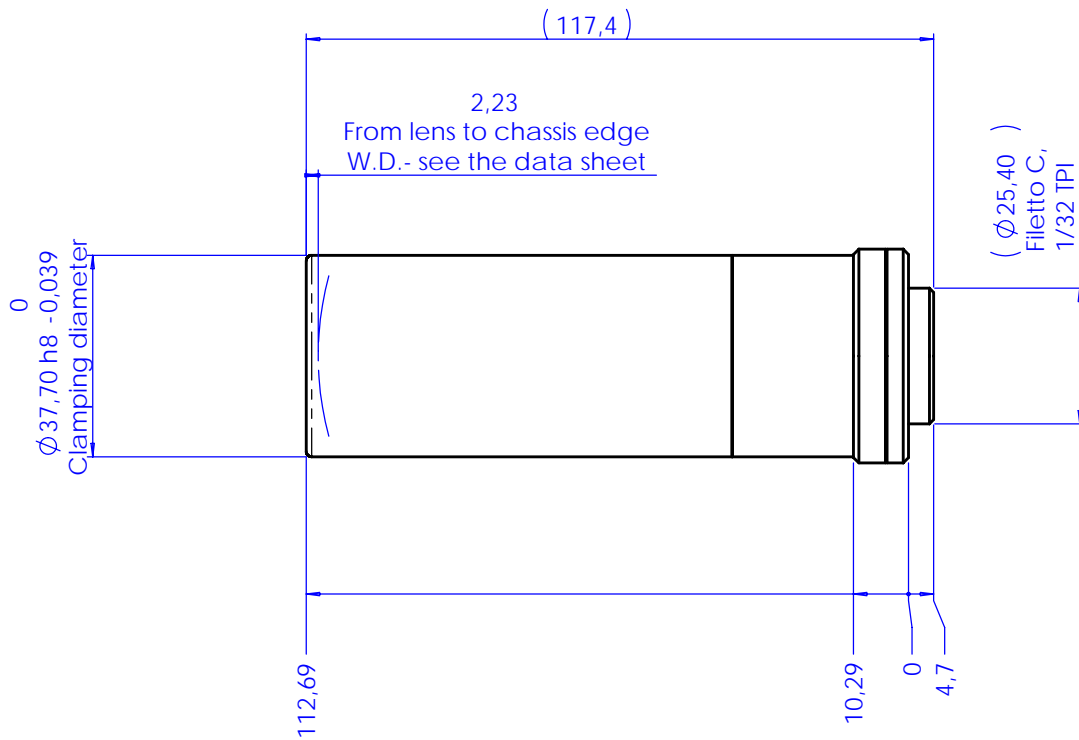


Model:	TC 23 16	
Magnification (X):	0,55	
Object Field (mm):	1/4" (3,6 x 2,7):	6,55 x 4,91
	1/3" (4,8 x 3,6):	8,73 x 6,55
	1/2" (6,4 x 4,8):	11,64 x 8,73
	1/1.8" (7,13 x 5,37):	12,96 x 9,76
	2/3" (8,8 x 6,6):	16,00 x 12,00
Working Distance (mm):	45,3 +/- 1	
Working F-number:	8	
MTF @70 lp/mm (%):	>30	
Field Depth (mm):	3,0 @ F/ 8	
Image side N.A.:	0,062	
Object side N.A.:	0,033	
Telecentricity (degree):	< 0,1	
Distortion (%):	<0,07	
Mount:	C	
Length (mm):	112,0	
Maximum external diameter (mm):	37,8	
Weigh (g):	290	

NOTES:

- 1) The inner aperture diaphragm can be supplied on request with smaller apertures in order to achieve a larger Field Depth
- 2) Tailored diffusive Ring Light available on request
- 3) Custom flanges and mechanical interfaces can be provided on request
- 4) Can be coupled to a collimated light illuminator like LT CL 16

Rev No.	Description	Date	Name
A	First light	01/05/03	A.Vismara
D	Redesign	15/02/06	A.Vismara



Material	N.A.			Mass	0.30 kg	Scale	1:1
Surface treatment	N.A.			Project-Prod.Item/Instrument Telecentric lens 23 16			
Geometrical tolerance (ISO 2768-2)			Class	K	Undimensioned bevels	1x45°	Description Assembly
Linear tolerance (ISO 2768-2)			Class	m			
0.5	>3-	>6-	>30+	>120	>400+	>1000	>2000
+3	6	30	120	+400	+1000	+2000	+4000
±0.1	±0.1	±0.2	±0.3	±0.5	±0.8	±1.2	±2
www.opto-engineering.com			Date		Name		Drawing No.
			Designed		A.Vismara		01251-0-D
			Draw		A.Vismara		
			Checked		C. Sedazzari		
Reproduction forbidden without specific authorization							