

BI-TELECENTRIC LENS FOR 2/3" TO 1/4" DETECTORS



WWW.OPTO-ENGINEERING.COM

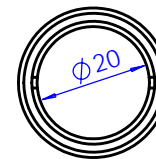
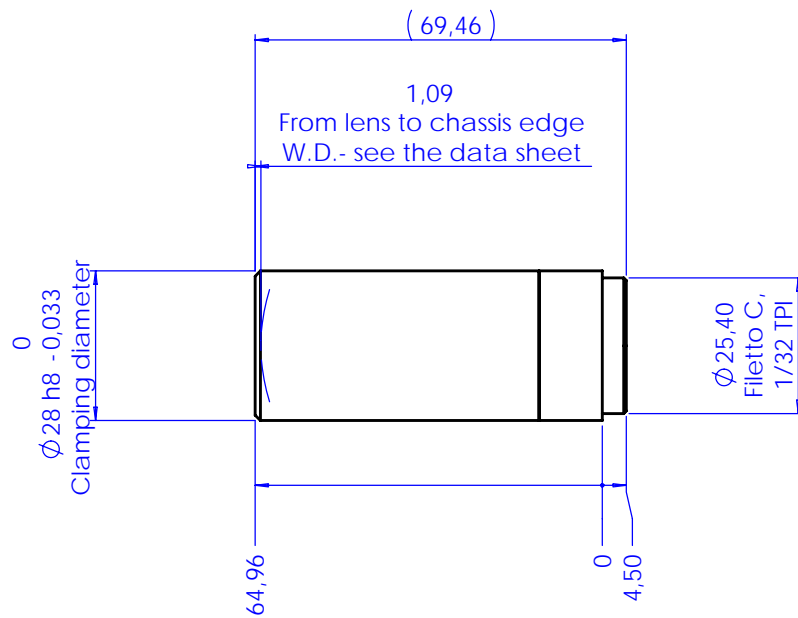


Model:	TC 23 09	
Magnification (X):	1	
Object Field (mm):	1/4" (3,6 x 2,7):	3,60 x 2,70
	1/3" (4,8 x 3,6):	4,80 x 3,60
	1/2" (6,4 x 4,8):	6,40 x 4,80
	1/1.8" (7,13 x 5,37):	7,13 x 5,37
	2/3" (8,8 x 6,6):	8,80 x 6,60
Working Distance (mm):	63,3 +/- 2	
Working F-number:	11	
MTF @70 lp/mm (%):	>25	
Field Depth (mm):	1,0 @ F/ 11	
Image side N.A.:	0,045	
Object side N.A.:	0,045	
Telecentricity (degree):	< 0,08	
Distortion (%):	< 0,08	
Mount:	C	
Length (mm):	65,0	
Maximum external diameter (mm):	28,0	
Weigh (g):	130	

NOTES:

- 1) The inner aperture diaphragm can be interchanged with smaller apertures in order to achieve a larger Field Depth
- 2) Tailored diffusive Ring Light available on request
- 3) Custom flanges and mechanical interfaces can be provided on request

Rev No.	Description	Date	Name
A	Layout	07/06/05	A.Vismara



Material	N.A.			Mass	0.12 kg	Scale	1:1
Surface treatment	N.A.			Project-Prod.Item/Instrument Telecentric lens 23 09			
Geometrical tolerance (ISO 2768-2)			Class	K	Undimensioned bevels		
Linear tolerance (ISO 2768-2)			Class	m	Undimensioned radii		
0.5	>3-	>6-	>30-	>120	>400-	>1000	>2000
+3	6	30	120	+400	+1000	+2000	+4000
± 0.1	± 0.1	± 0.2	± 0.3	± 0.5	± 0.8	± 1.2	± 2
Date				Name			
Designed		07/06/05	A.Vismara				
Draw		07/06/05	A.Vismara				
Checked		X	C. Sedazzari				
Drawing No.				Sheet			
02009-0-A				1/1			
www.opto-engineering.com OPTO ENGINEERING S.r.l. - 46100 Mantova Italy - Via Cremona, 28 - Tel. +39 0376 229585 - e-mai: info@opto-engineering.com - http://www.opto-engineering.com							

Reproduction forbidden without specific authorization