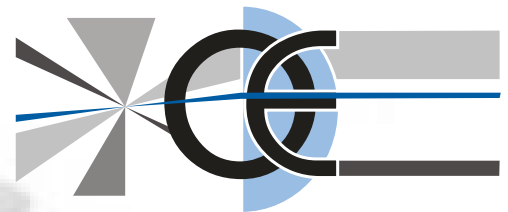


# BI-TELECENTRIC LENS FOR 2/3" TO 1/4" DETECTORS



WWW.OPTO-ENGINEERING.COM

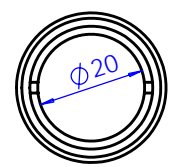
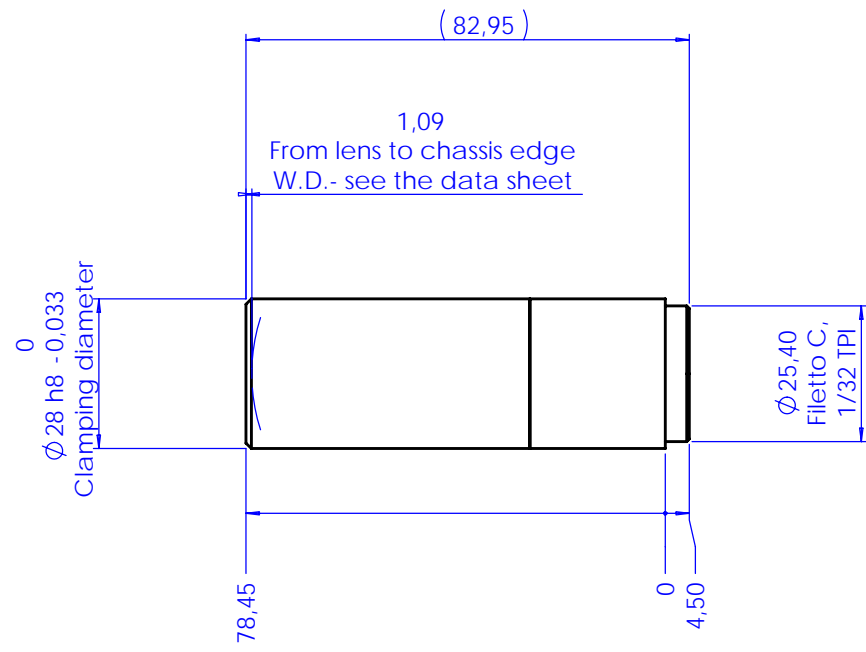


<b>Model:</b>	<b>TC 23 07</b>		
<b>Magnification (X):</b>	1,3333		
<b>Object Field (mm):</b>	1/4" (3,6 x 2,7):	2,70	x 2,03
	1/3" (4,8 x 3,6):	3,60	x 2,70
	1/2" (6,4 x 4,8):	4,80	x 3,60
	1/1.8" (7,13 x 5,37):	5,35	x 4,03
	2/3" (8,8 x 6,6):	6,60	x 4,95
<b>Working Distance (mm):</b>	61,2 +/- 2		
<b>Working F-number:</b>	11		
<b>MTF @70 lp/mm (%):</b>	>30		
<b>Field Depth (mm):</b>	0,5 @ F/ 11		
<b>Image side N.A.:</b>	0,045		
<b>Object side N.A.:</b>	0,060		
<b>Telecentricity (degree):</b>	< 0,08		
<b>Distortion (%):</b>	< 0,08		
<b>Mount:</b>	C		
<b>Length (mm):</b>	78,5		
<b>Maximum external diameter (mm):</b>	28,0		
<b>Weigh (g):</b>	150		

## NOTES:

- 1) The inner aperture diaphragm can be interchanged with smaller apertures in order to achieve a larger Field Depth
- 2) Tailored diffusive Ring Light available on request
- 3) Custom flanges and mechanical interfaces can be provided on request

Rev No.	Description	Date	Name
A	Layout	07/06/05	A.Vismara



Material	N.A.			Mass	0.12 kg	Scale	1:1
Surface treatment	N.A.			Project-Prod.Item/Instrument Telecentric lens 23 07			
Geometrical tolerance (ISO 2768-2)			Class	K	Description		
Linear tolerance (ISO 2768-2)			Class	m	Undimensioned bevels	1x45°	Assembly
0.5	>3-	>6-	>30-	>120	>400-	>1000	
+3	6	30	120	+400	1000	+2000	R 0.5
±0.1	±0.1	±0.2	±0.3	±0.5	±0.8	±1.2	±2
www.opto-engineering.com			Date	Name	Drawing No.		
Designed			07/06/05	A.Vismara	02021-0-A		
Draw			07/06/05	A.Vismara	Sheet		
Checked			X	C. Sedazzari	1/1		
Reproduction forbidden without specific authorization							