

BI-TELECENTRIC LENS FOR 2/3" TO 1/4" DETECTORS



WWW.OPTO-ENGINEERING.COM

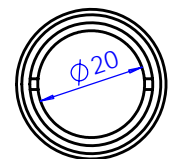
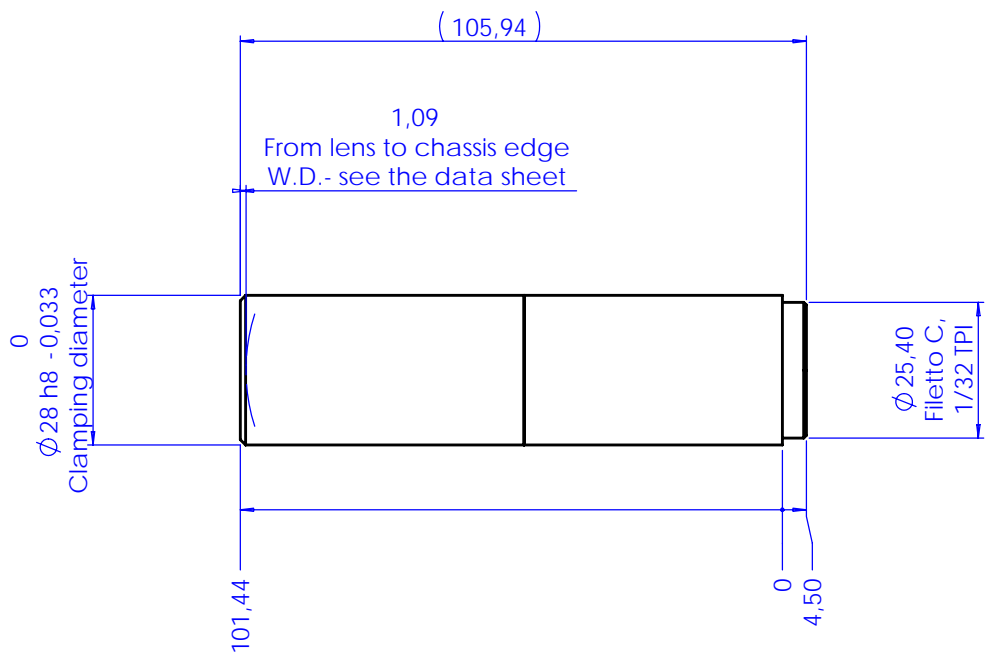


Model:	TC 23 04	
Magnification (X):	2	
Object Field (mm):	1/4" (3,6 x 2,7):	1,80 x 1,35
	1/3" (4,8 x 3,6):	2,40 x 1,80
	1/2" (6,4 x 4,8):	3,20 x 2,40
	1/1.8" (7,13 x 5,37):	3,56 x 2,68
	2/3" (8,8 x 6,6):	4,40 x 3,30
Working Distance (mm):	57,1 +/- 2	
Working F-number:	11	
MTF @70 lp/mm (%):	>30	
Field Depth (mm):	0,2 @ F/ 11	
Image side N.A.:	0,045	
Object side N.A.:	0,090	
Telecentricity (degree):	< 0,08	
Distortion (%):	< 0,08	
Mount:	C	
Length (mm):	101,4	
Maximum external diameter (mm):	28,0	
Weigh (g):	170	

NOTES:

- 1) The inner aperture diaphragm can be interchanged with smaller apertures in order to achieve a larger Field Depth
- 2) Tailored diffusive Ring Light available on request
- 3) Custom flanges and mechanical interfaces can be provided on request

Rev No.	Description	Date	Name
A	Layout	07/06/05	A.Vismara



Material	N.A.			Mass	0.13 kg	Scale	1:1	
Surface treatment	N.A.			Project-Prod.Item/Instrument Telecentric lens 23 04				
Geometrical tolerance (ISO 2768-2)			Class	K	Undimensioned bevels			
Linear tolerance (ISO 2768-2)			Class	m	1x45°			
0.5	>3-	>6-	>30-	>120	>400-	>1000	>2000	
+3	6	30	120	+400	+1000	+2000	+4000	
±0.1	±0.1	±0.2	±0.3	±0.5	±0.8	±1.2	±2	
Undimensioned radii			R 0.5			Description Assembly		
		Date	Name	Drawing No.		Sheet		
Designed	07/06/05	A.Vismara	02041-0-A		1/1		Reproduction forbidden without specific authorization	
Draw	07/06/05	A.Vismara						
Checked	X	C. Sedazzari						
OPTO ENGINEERING S.r.l. - 46100 Mantova Italy - Via Cremona, 28 - Tel. +39 0376 229585 - e-mai: info@opto-engineering.com - http://www.opto-engineering.com								