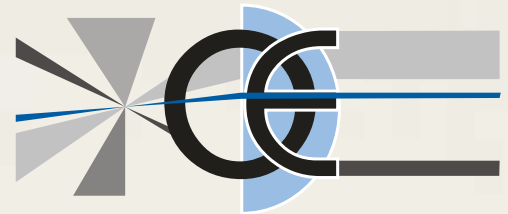


BI-TELECENTRIC LENS FOR 1/3" TO 1/4" DETECTORS



WWW.OPTO-ENGINEERING.COM

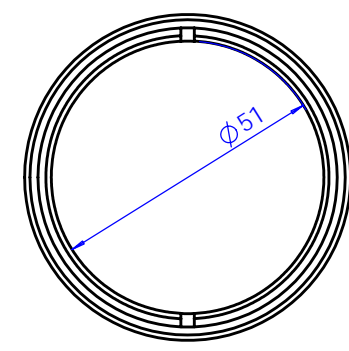
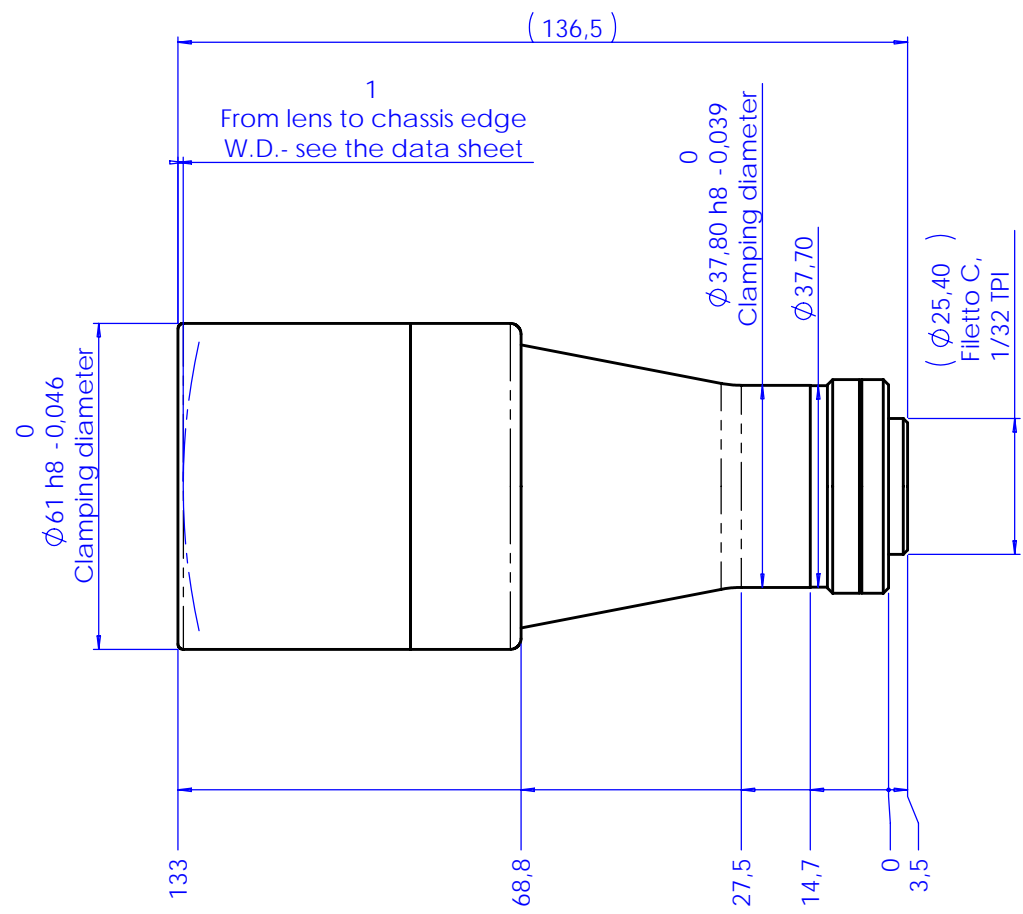


Model:	TC 13 36		
Magnification (X):	0,13		
Object Field (mm):	1/4" (3,6 x 2,7):	27,00	x 20,25
	1/3" (4,8 x 3,6):	36,00	x 27,00
	1/2" (6,4 x 4,8):	∅ =	36,00
	1/1.8" (7,13 x 5,37):	∅ =	40,26
	2/3" (8,8 x 6,6):	n.a	
Working Distance (mm):	103,5 +/- 3		
Working F-number:	8		
MTF @70 lp/mm (%):	>50		
Field Depth (mm):	38,0	@	F/ 8
Image side N.A.:	0,062		
Object side N.A.:	0,008		
Telecentricity (degree):	<0,08		
Distortion (%):	< 0,08		
Mount:	C		
Length (mm):	133		
Maximum external diameter (mm):	61		
Weigh (g):	410		

NOTES:

- 1) The inner aperture diaphragm can be supplied on request with smaller apertures in order to achieve a larger Field Depth
- 2) Tailored diffusive Ring Light available on request
- 3) Custom flanges and mechanical interfaces can be provided on request
- 4) Can be coupled to a collimated light illuminator like LT CL 36
- 5) compatible with Diffuse Coaxial LT CX 36 Illuminator

Rev No.	Description	Date	Name
A	First light	01/05/03	A.Vismara
D	Redesign	24/03/06	A.Vismara



Material	N.A.			Mass	0.46 kg	Scale	1:1
Surface treatment	N.A.			Project-Prod.Item/Instrument Telecentric lens 13 36			
Geometrical tolerance (ISO 2768-2)			Class	K	Description		
Linear tolerance (ISO 2768-2)			Class	m	Undimensioned bevels	1x45°	Assembly
0.5 +3	>3- 6	>6- 30	>30- 120	>120 +400	>400- 1000	>1000 +2000	
±0.1	±0.1	±0.2	±0.3	±0.5	±0.8	±1.2	±2
www.opto-engineering.com			Date	Name	Drawing No.		
			Designed	15/02/06	A.Vismara	01009-0-D	
			Draw	24/03/06	A.Vismara	Sheet	
			Checked	X	C. Sedazzari	1/1	
Reproduction forbidden without specific authorization							