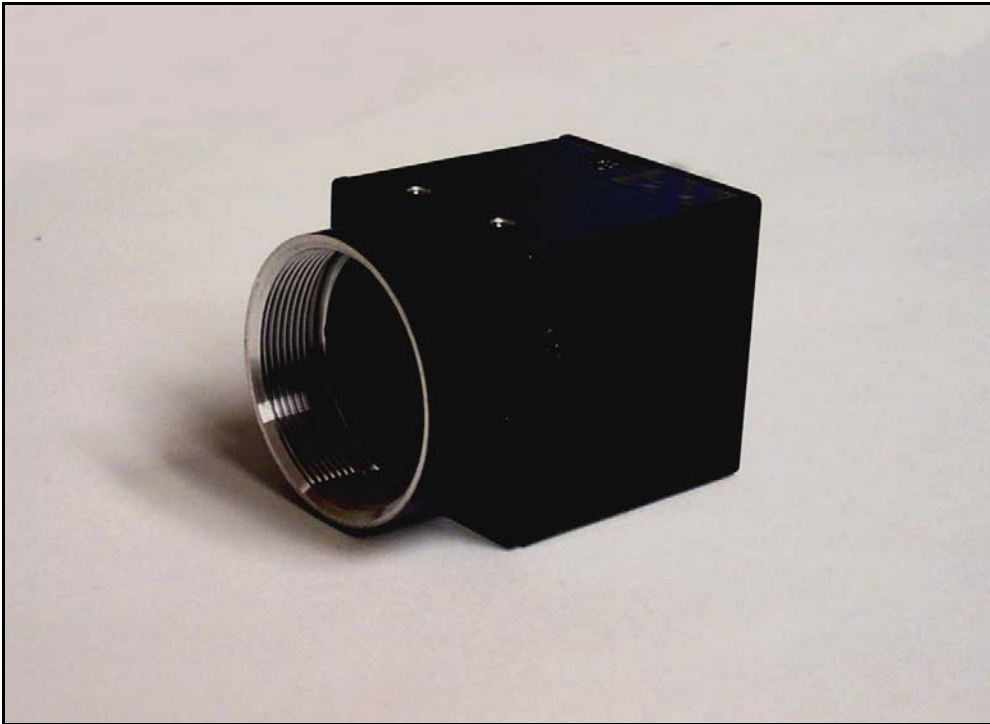


***1stVision***

---

**MC-CC-P60**

***Tiny 60 fps Progressive  
Scan "Cube Cam"***

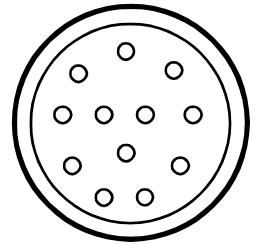


- **1/3" Sony Progressive Scan CCD Sensor**
- **659 x 494 Active Pixels 7.4 x 7.4 um**
- **60 fps non interlaced, 120 fps interlaced**
- **Extremely Small Size , 29x29x39 mm, 50 grams**
- **High S/N Ratio >56db**
- **Very High Sensitivity 0.4lux @ F1.4**
- **Partial Scan; 1/2, 1/4 scans**
- **Very Flexible Trigger and Shutter Modes**
- **Asynchronous Reset**
- **Integration controllable by trigger pulse**
- **Shutter speeds from 1/20,000 to 1/200 Sec**
- **HD/VD In/Out Synchronization**
- **C Mount Lens interface**

## Detailed Specifications

Sensor	1/3" Sony IT CCD Progressive
Effective # of elements	659 x 494
Element Size	7.4 x 7.4 um
S/N ratio	> 56db
Sensitivity of sensor	0.4 lux at F1.4
Gain	Fixed/Manual
Gamma	1.0 fixed
Shutter	1/200 - 1/20,000 sec
Interlace	1/120 sec 2:1, 1/60 sec non interlace
Trigger	Random trig, Pulse Width, Reset/Restart
Synchronization	HD/VD Internal/External
Horizontal Freq	31.468 KHz
Vertical Freq	59.94/119.88 Hz non/2:1 interlace
Aspect Ratio	4:3
Video Resolution	485 TVL
Power	12 VDC +/- 10%
Power Consumption	~1.8W
Shock	70G
Vibration	10G
Operating Temp	-10 - 50 Deg C
Humidity	20-80% Non condensing
Dimensions	29x29x39mm (excluding Lens Mount)
Weight	~ 50g

## Connections and Switches

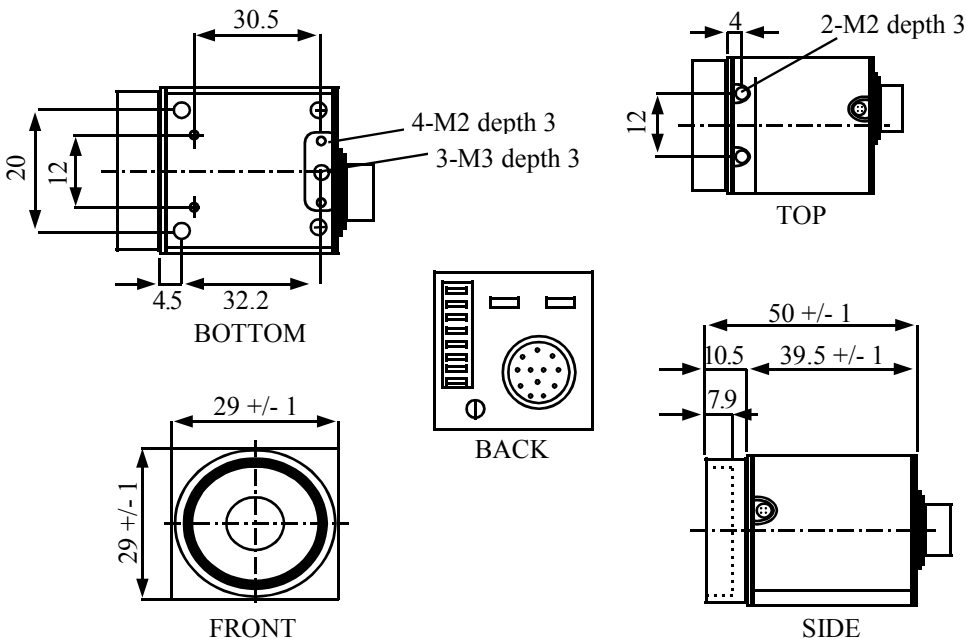


HR10A-10P-12S

Pin #	PLL Sync*
1	GND
2	+12V
3	GND
4	VID OUT
5	GND
6	HD OUT*
7	VD OUT*
8	GND
9	NC
10	WEN OUT
11	TRIG IN
12	GND

\*See manual for other sync modes

## Dimensions and Mechanical



DIP Switch #	Function
1	Shutter speed
2	Shutter speed
3	Shutter speed
4	Non/interlace
5	Shutter mode
6	Shutter mode
7	Partial Scan
8	Partial Scan
9	Trig Polarity +/-
0	AGC Off/On