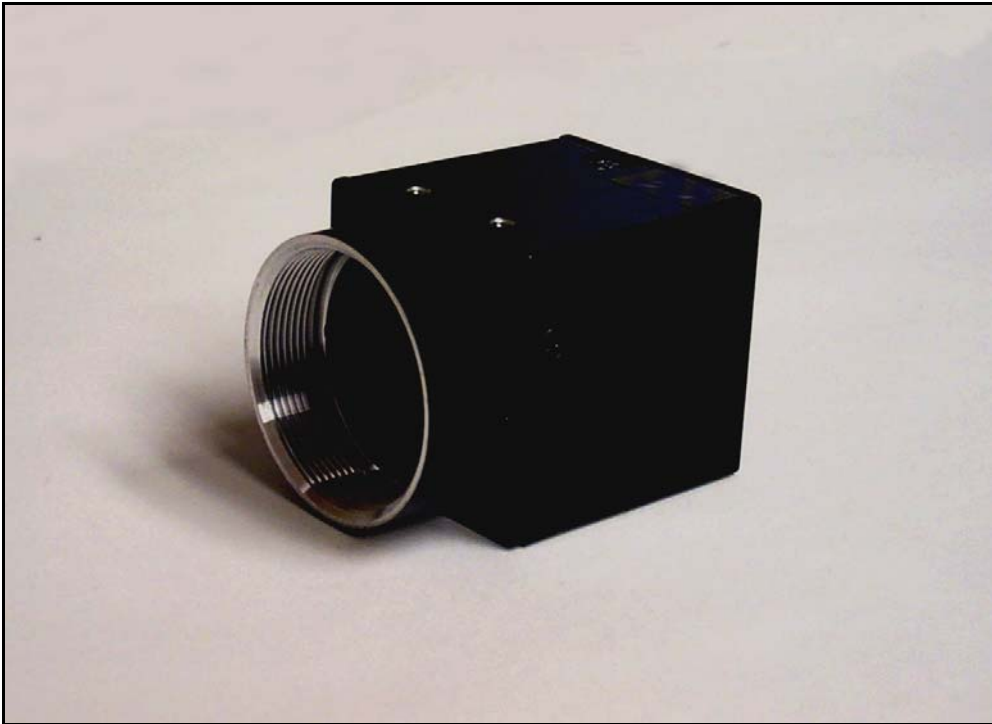


1stVision

MC-CC-RS

RS170 B&W “Cube Cam”

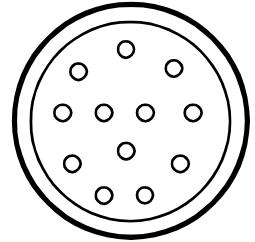


- 1/2" Sony IT CCD Sensor
- 768 x 494 Active Pixels 8.4x9.8 um
- Extremely Small Size , 29x29x31 mm, 50 grams
- High S/N Ratio >60db
- Very High Sensitivity 0.3lux @ F1.4
- Very Flexible Trigger and Shutter Modes
- Asynchronous Reset
- Integration controllable by trigger pulse
- Shutter speeds from 1/10,000 to 1/6 Sec
- HD/VD In/Out Synchronization
- Frame or field exposure
- C Mount Lens interface

Detailed Specifications

Sensor	1/2" Sony IT CCD
Effective # of elements	768 x 494 (EIA)
Element Size	8.4 x 9.8 um
S/N ratio	> 60 db
Sensitivity of sensor	0.3 lux at F1.4
Gain	AGC/Manual
Gamma	1.0/0.45 select
Shutter	1/6 - 1/10,000 sec
Integration	Field/Frame
Trigger	Random trig, Pulse Width, Reset/Restart
Synchronization	HD/VD Internal/External
Horizontal Freq	15.734 KHz
Vertical Freq	59.94 Hz/field
Scanning System	2:1 Interlace
Video Resolution	570 TVL
Power	12 VDC +/- 10%
Power Consumption	~1.4W
Shock	70G
Vibration	10G
Operating Temp	-10 - 50 Deg C
Humidity	20-80% Non condensing
Dimensions	29x29x31mm (excluding Lens Mount)
Weight	~ 50g

Connections and Switches

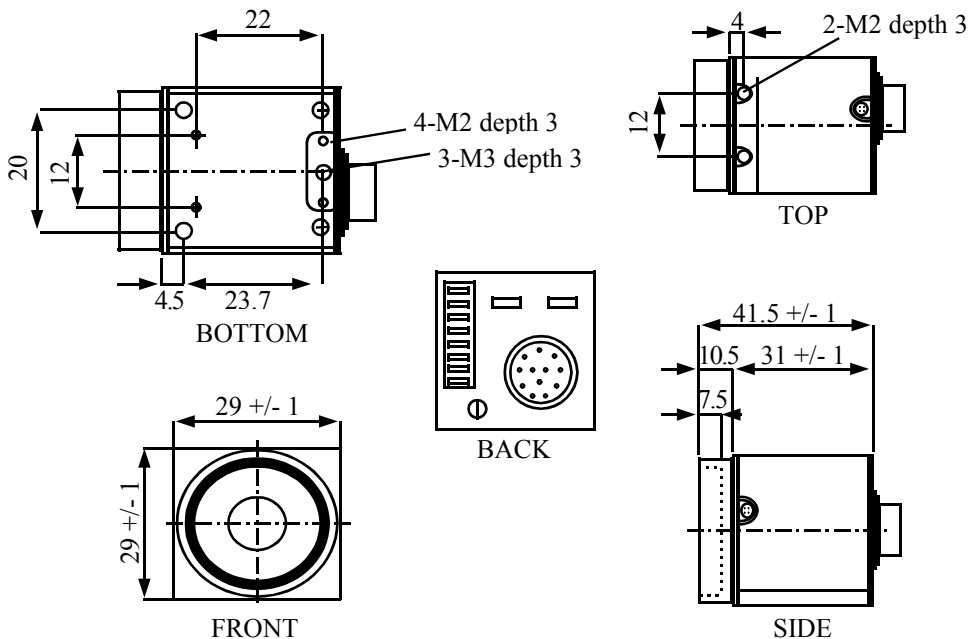


HR10A-10P-12S

Pin #	PLL Sync*
1	GND
2	+12V
3	GND
4	VID OUT
5	GND
6	HD OUT*
7	VD OUT*
8	GND
9	CLK OUT
10	WEN OUT
11	TRIG IN
12	GND

*See manual for other sync modes

Dimensions and Mechanical



DIP Switch #	Function
1	Shutter mode
2	Shutter mode
3	Shutter Speed
4	Shutter Speed
5	Shutter Speed
6	Shutter Speed
7	Trig Pol +/-
8	Frame/Field
9	Gamma 1/ .45
0	AGC Off/On