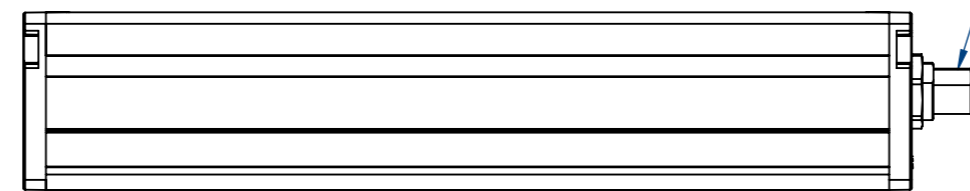
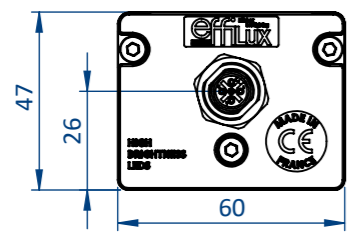
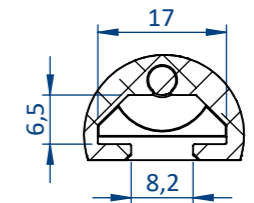
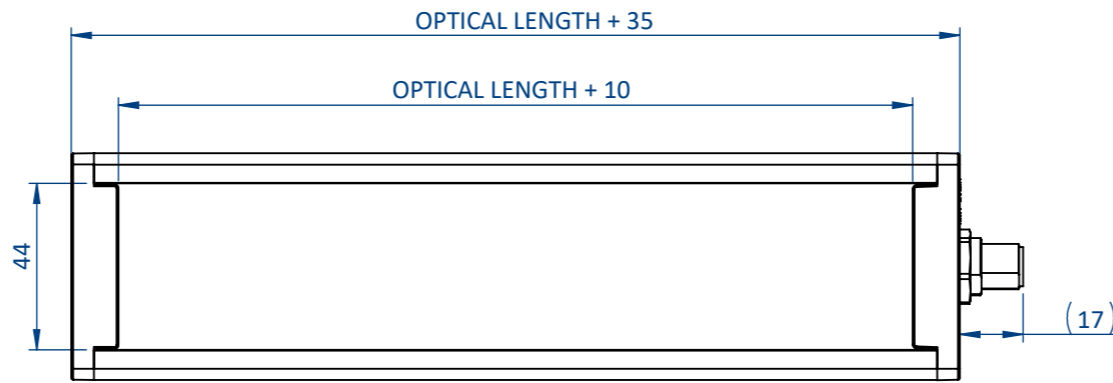
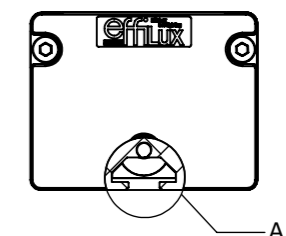


THIS DOCUMENT AND THE INFORMATION IT CONTAINS ARE PROPERTY OF EFFILUX AND CONFIDENTIAL. THEY SHALL NOT BE REPRODUCED NOR DISCLOSED TO ANY PERSON EXCEPT TO THOSE HAVING A NEED TO KNOW THEM WITHOUT PRIOR WRITTEN CONSENT OF EFFILUX

CE DOCUMENT ET LES INFORMATIONS QU'IL CONTIENT SONT CONFIDENTIELS ET SONT LA PROPRIETE EXCLUSIVE DE EFFILUX. ILS NE DOIVENT ETRE COMMUNIQUEES QU' AUX PERSONNES AYANT A EN CONNAITRE ET NE PEUVENT ETRE REPRODUITS NI DIVULGUES A TOUTE AUTRE PERSONNE SANS AUTORISATION PREALABLE ECRITE PAR EFFILUX

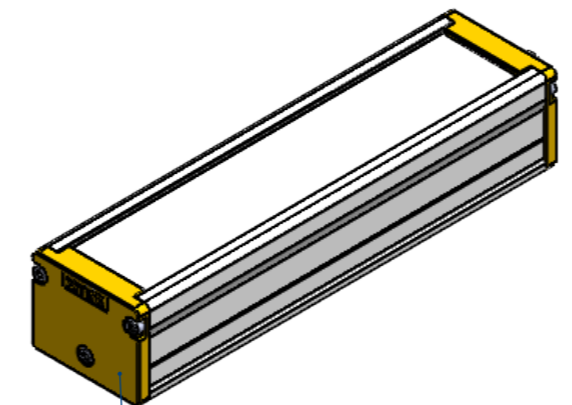


M12 OR M12P DEPENDING ON POWER CONSUMPTION. REFER TO THE DATASHEET



DETAIL A
SCALE 1 : 1
MOUNTING: T-NUT 8MM SLOT, M6

OPTICAL LENGTH (XXX)	PRODUCT LENGTH	WEIGHT (KG)
200	235	0,5
400	435	1,0
600	635	1,5
800	835	2,0
1000	1035	2,5
1200	1235	2,9
1400	1435	3,4
1600	1635	3,9
1800	1835	4,4
2000	2035	4,9
2200	2235	5,3
2400	2435	5,8
2600	2635	6,3
2800	2835	6,8



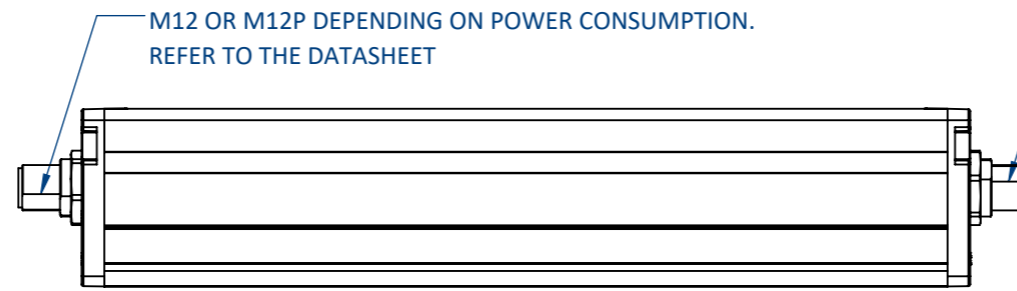
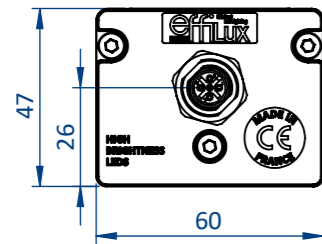
ALWAYS OPEN THE PRODUCT FROM THIS SIDE

PLEASE REFER TO THE SPECIFIC DOCUMENTATION FOR WIRING LAYOUT

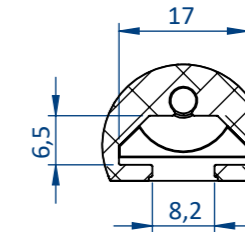
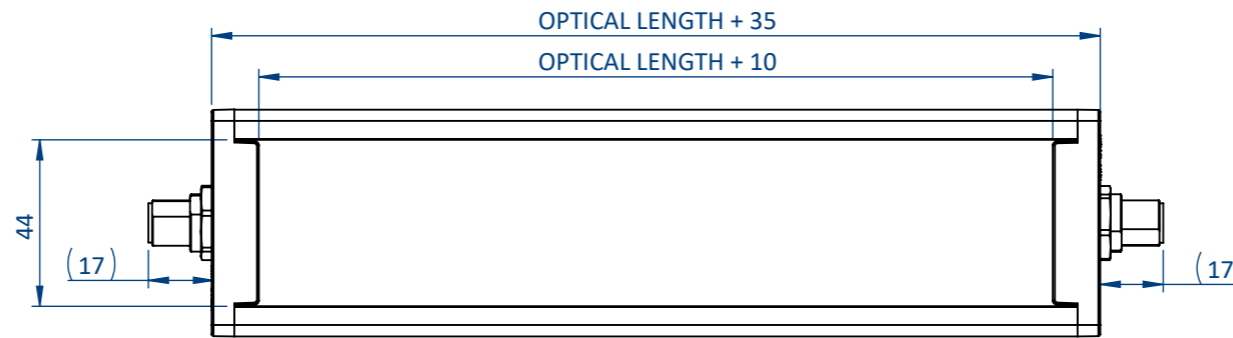
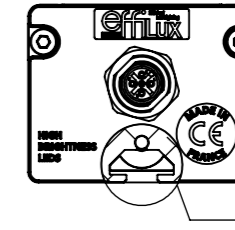
Reference EFFI-FLEX LOGISTIC		IP 5X	1 Rue de Terre Neuve Mini Parc du Verger Bâtiment E 91940 Les Ulis, France	
Designation EFFI-FLEX-LG-XXXX-ZZZ-WW-PP		Mail: sales@effilux.fr Tel : +33 9 72 52 70 03 www.effilux.com		
Revision /	Date 17/11/2021	Unit : mm	General Tolerances	
Scale 1:2	Size A3	Page 1/1	X ≤ 300 TOL ±0,2 300 < X < 800 TOL ±0,5 X ≥ 800 TOL ± 1	

THIS DOCUMENT AND THE INFORMATION IT CONTAINS ARE PROPERTY OF EFFILUX AND CONFIDENTIAL. THEY SHALL NOT BE REPRODUCED NOR DISCLOSED TO ANY PERSON EXCEPT TO THOSE HAVING A NEED TO KNOW THEM WITHOUT PRIOR WRITTEN CONSENT OF EFFILUX

CE DOCUMENT ET LES INFORMATIONS QU'IL CONTIENT SONT CONFIDENTIELS ET SONT LA PROPRIETE EXCLUSIVE DE EFFILUX. ILS NE DOIVENT ETRE COMMUNIQUEES QU' AUX PERSONNES AYANT A EN CONNAITRE ET NE PEUVENT ETRE REPRODUITS NI DIVULGUES A TOUTE AUTRE PERSONNE SANS AUTORISATION PREALABLE ECRITE PAR EFFILUX

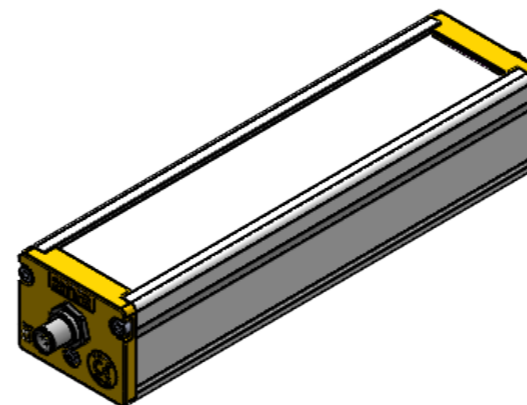


M12 OR M12P DEPENDING ON POWER CONSUMPTION. REFER TO THE DATASHEET



DETAIL A
SCALE 1 : 1
MOUNTING : T-NUT 8MM SLOT, M6

OPTICAL LENGTH (XXX)	PRODUCT LENGTH	WEIGHT (KG)
200	235	0,5
400	435	1,0
600	635	1,5
800	835	2,0
1000	1035	2,5
1200	1235	2,9
1400	1435	3,4
1600	1635	3,9
1800	1835	4,4
2000	2035	4,9
2200	2235	5,3
2400	2435	5,8
2600	2635	6,3
2800	2835	6,8

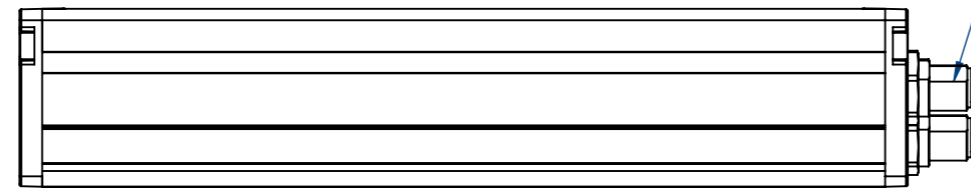
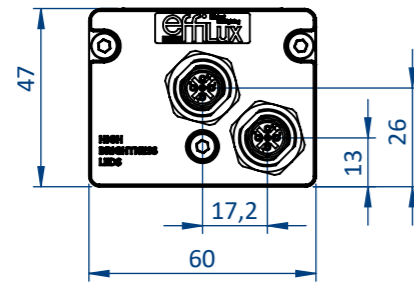


PLEASE REFER TO THE SPECIFIC DOCUMENTATION FOR WIRING LAYOUT

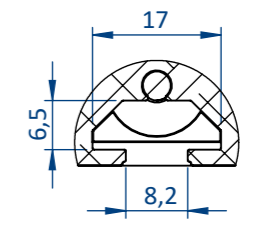
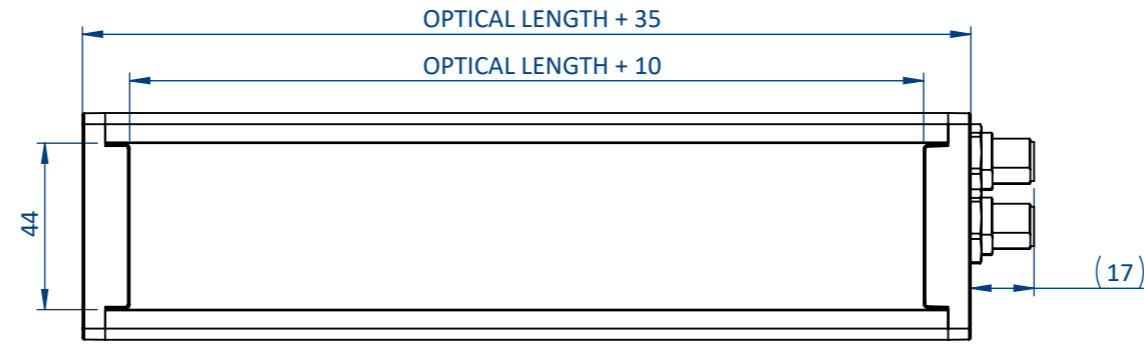
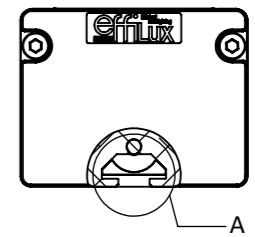
Reference EFFI-FLEX LOGISTIC CHO		IP 5X	1 Rue de Terre Neuve Mini Parc du Verger Bâtiment E 91940 Les Ulis, France	
Designation EFFI-FLEX-LG-XXXX-ZZZ-WW-PP-CHO			Mail: sales@effilux.fr Tel : +33 9 72 52 70 03 www.effilux.com	
Revision /	Date 17/11/2021	Unit : mm	General Tolerances	
Scale 1:2	Size A3	Page 1/1	X ≤ 300 TOL ±0,2 300 < X < 800 TOL ±0,5 X ≥ 800 TOL ± 1	

THIS DOCUMENT AND THE INFORMATION IT CONTAINS ARE PROPERTY OF EFFILUX AND CONFIDENTIAL. THEY SHALL NOT BE REPRODUCED NOR DISCLOSED TO ANY PERSON EXCEPT TO THOSE HAVING A NEED TO KNOW THEM WITHOUT PRIOR WRITTEN CONSENT OF EFFILUX

CE DOCUMENT ET LES INFORMATIONS QU'IL CONTIENT SONT CONFIDENTIELS ET SONT LA PROPRIETE EXCLUSIVE DE EFFILUX. ILS NE DOIVENT ETRE COMMUNIQUEES QU' AUX PERSONNES AYANT A EN CONNAITRE ET NE PEUVENT ETRE REPRODUITS NI DIVULGUES A TOUTE AUTRE PERSONNE SANS AUTORISATION PREALABLE ECRITE PAR EFFILUX

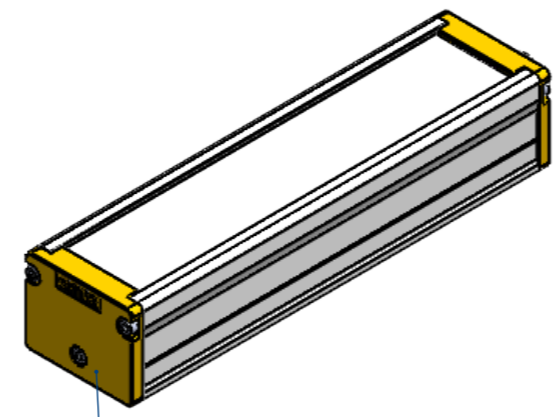


M12 OR M12P DEPENDING ON POWER CONSUMPTION. REFER TO THE DATASHEET



DETAIL A
SCALE 1 : 1
MOUNTING: T-NUT 8MM SLOT, M6

OPTICAL LENGTH (XXX)	PRODUCT LENGTH	WEIGHT (KG)
200	235	0,5
400	435	1,0
600	635	1,5
800	835	2,0
1000	1035	2,5
1200	1235	2,9
1400	1435	3,4
1600	1635	3,9
1800	1835	4,4
2000	2035	4,9
2200	2235	5,3
2400	2435	5,8
2600	2635	6,3
2800	2835	6,8



ALWAYS OPEN THE PRODUCT FROM THIS SIDE

PLEASE REFER TO THE SPECIFIC DOCUMENTATION FOR WIRING LAYOUT

Reference EFFI-FLEX LOGISTIC CHS & CPW		IP 5X	1 Rue de Terre Neuve Mini Parc du Verger Bâtiment E 91940 Les Ulis, France
Designation EFFI-FLEX-LG-XXXX-ZZZ-WW-PP-CCC		Mail: sales@effilux.fr Tel : +33 9 72 52 70 03 www.effilux.com	
Revision /	Date 19/11/2021	Unit : mm	General Tolerances X ≤ 300 TOL ±0,2 300 < X < 800 TOL ±0,5 X ≥ 800 TOL ± 1
Scale 1:2	Size A3	Page 1/1	

