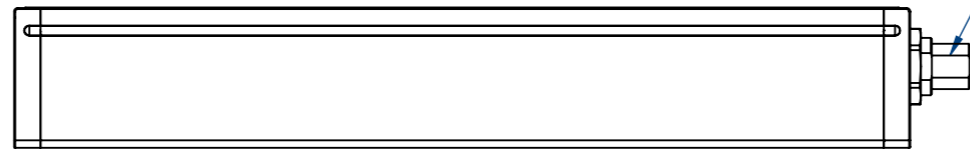
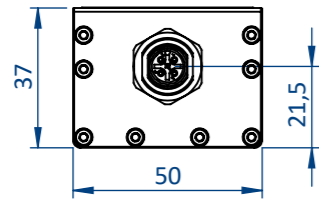
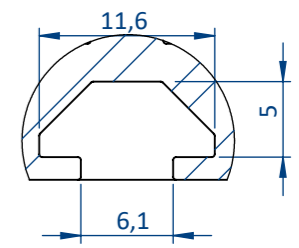
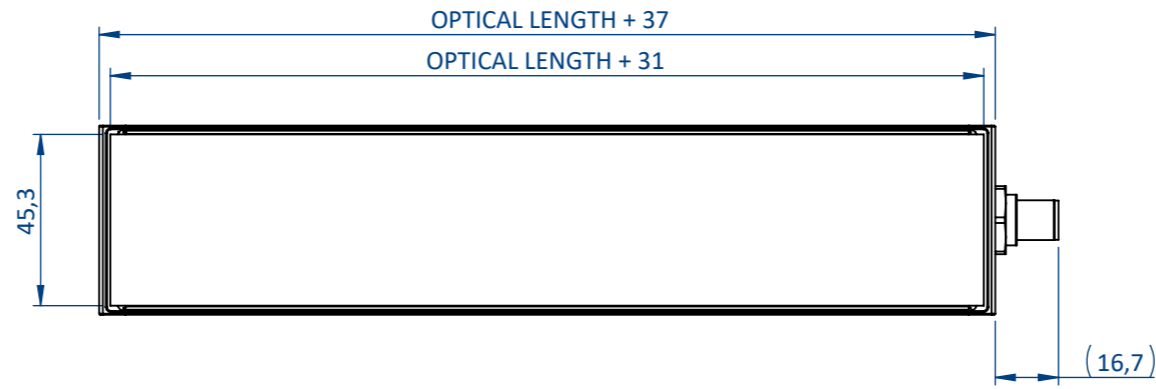
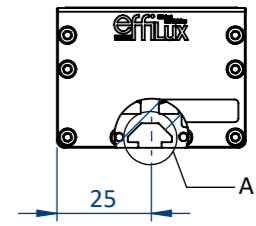


THIS DOCUMENT AND THE INFORMATION IT CONTAINS ARE PROPERTY OF EFFILUX AND CONFIDENTIAL. THEY SHALL NOT BE REPRODUCED NOR DISCLOSED TO ANY PERSON EXCEPT TO THOSE HAVING A NEED TO KNOW THEM WITHOUT PRIOR WRITTEN CONSENT OF EFFILUX

CE DOCUMENT ET LES INFORMATIONS QU'IL CONTIENT SONT CONFIDENTIELS ET SONT LA PROPRIETE EXCLUSIVE DE EFFILUX. ILS NE DOIVENT ETRE COMMUNIQUEES QU' AUX PERSONNES AYANT A EN CONNAITRE ET NE PEUVENT ETRE REPRODUITS NI DIVULGUES A TOUTE AUTRE PERSONNE SANS AUTORISATION PREALABLE ECRITE PAR EFFILUX

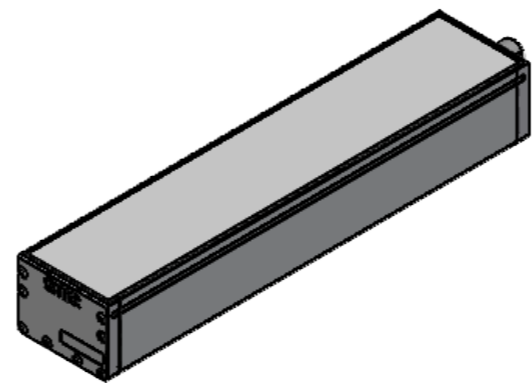


M12 OR M12P DEPENDING ON POWER CONSUMPTION. REFER TO THE DATASHEET



DETAIL A  
SCALE 2 : 1  
MOUNTING: T-NUT 6MM SLOT, M4

NUMBER OF LED-XXX (STANDARD VERSION)	OPTICAL LENGTH	PRODUCT LENGTH	WEIGHT (KG)
1 LED	20	57	0,15
3 LED	60	97	0,2
5 LED	100	137	0,3
10 LED	200	237	0,5
15 LED	300	337	0,7
20 LED	400	437	0,9
25 LED	500	537	1,1
...	...	...	...
140 LED	2800	2837	6,0
145 LED	2900	2937	6,2



PLEASE REFER TO THE SPECIFIC DOCUMENTATION FOR WIRING LAYOUT

Reference <b>STANDARD EFFI-FLEX-CPT</b>		IP <b>67</b>	1 Rue de Terre Neuve Mini Parc du Verger Bâtiment E 91940 Les Ulis, France	
Designation <b>EFFI-FLEX-CPT-XXX-ZZZ-WW-PP</b>		Mail: sales@effilux.fr Tel : +33 9 72 52 70 03 www.effilux.com		
Revision /	Date 07/05/2020	Unit : mm	General Tolerances	
Scale 1:2	Size A3	Page 1/1	ISO 2768 - fH-E	