

# exo253ZGE

Polarized

The Polarized cameras measure the degree of polarization and the planes of polarization from a single image. The high resolution with global shutter, the high optical dynamic and high frame rate allow detailed structural analysis of even moving objects.

The cameras are based on our fanless EXO industrial camera with milled aluminum body.

## Technical Highlights

- > LUT, ROI, Burst Mode
- > Electrical and optical inputs
- > Up to 60°C operating temperature
- > Integrated 4-channel strobe controller
- > Industrial TTL-24V I/O interface with SafeTrigger, logic functions, programmable sequencers and timers, RS232 interface



**Polarsens**

SVS-Vistek GmbH - Ferdinand-Porsche-Str. 3 - 82205 Gilching - Germany - Telephone +49 8105 3987-60

Information accurate as to: 16.11.2022, errors and omissions excepted.

© 2022 – SVS-Vistek GmbH, all rights reserved.

# SWIR / UV / Polarized Series exo253ZGE

|                              |                |
|------------------------------|----------------|
| Resolution [MP]              | 12.3 MP        |
| Resolution (h x v)           | 4096 x 3000 px |
| Frame rate (max.)            | 10 fps         |
| Frame rate burst mode (max.) | 23.5 fps       |
| Chroma                       | mono polarized |
| Interface                    | GigE Vision    |

## Sensor

|                     |                       |
|---------------------|-----------------------|
| Sensor              | IMX253MZR (polarized) |
| Manufacturer        | Sony                  |
| Sensor type         | Area CMOS             |
| Shutter type        | global shutter        |
| Sensor size (h x v) | 14.13 x 10.35 mm      |
| Optical diagonal    | 17.52 mm              |
| Sensor format       | 1.1 "                 |
| Pixel size (h x v)  | 3.45 x 3.45 μm        |

## Camera

|                     |                              |
|---------------------|------------------------------|
| Exposure modes      | MANUAL;AUTO;EXTERNAL         |
| Trigger modes       | INTERNAL;SOFTWARE;EXTERNAL   |
| Exposure time (min) | 28 μs                        |
| Exposure time (max) | 1 sec (external ∞)           |
| Pixel format / max  | mono8, mono12packed / 12 bit |
| Gain modes / max    | manual, auto / 48 dB         |
| Internal memory     | 256 MB SDRAM, 32 MB Flash    |

## Feature Set

|                         |     |
|-------------------------|-----|
| AOI                     | yes |
| LUT                     | yes |
| Offset                  | yes |
| Readout control         | yes |
| Binning                 | yes |
| Image flip              | yes |
| Shading correction      | yes |
| Defect pixel correction | yes |
| Sequencer               | yes |
| POE                     | yes |
| PTP                     | yes |

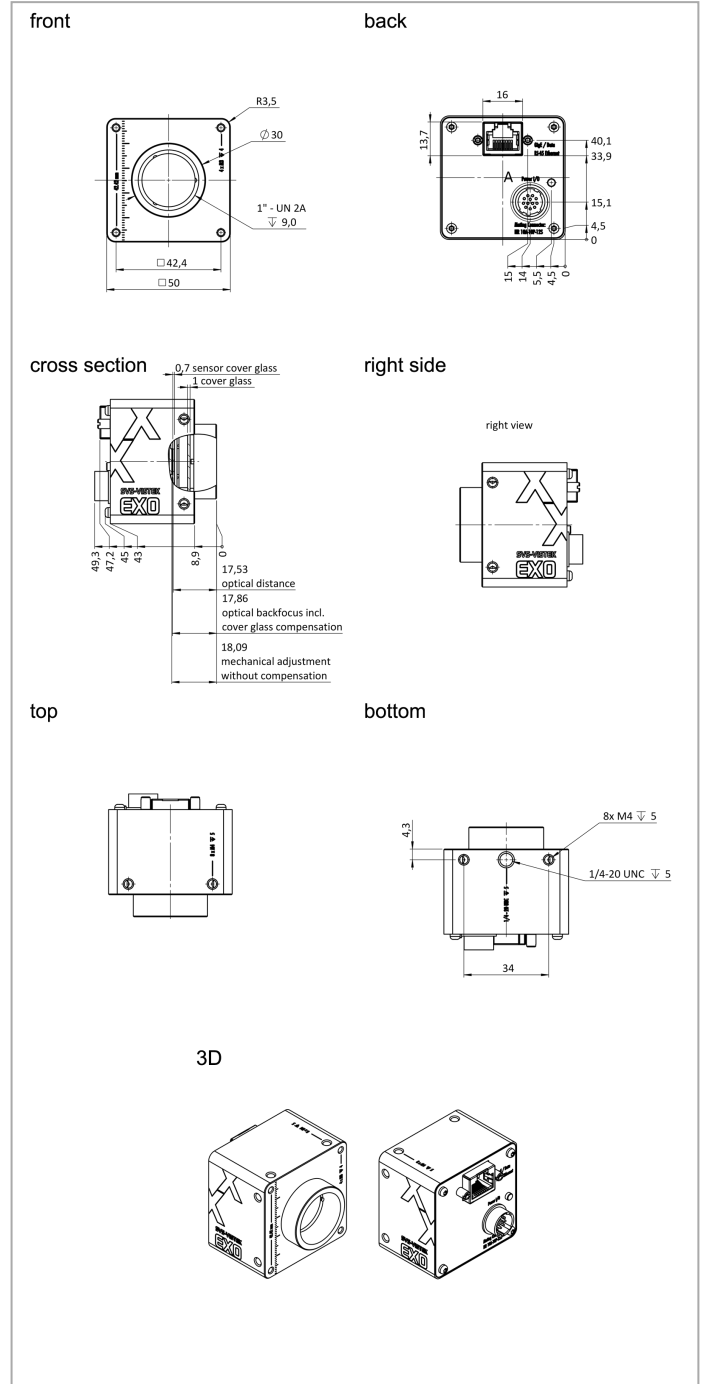
## Housing

|                                 |                             |
|---------------------------------|-----------------------------|
| Lens mount                      | C-Mount                     |
| Dimensions (w x h x d)          | 50 x 50 x 43 mm             |
| Weight                          | 140 g                       |
| Operating temperature (housing) | -10 to 60 °C                |
| Ambient humidity                | 10 to 90 % (non-condensing) |
| Protection class                | IP40                        |

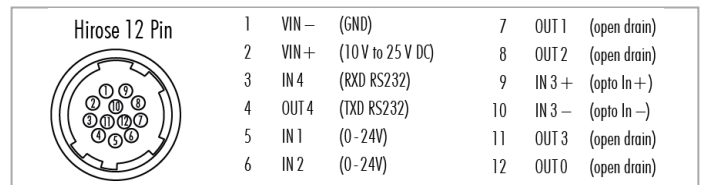
## I/O-Interfaces

|                 |     |
|-----------------|-----|
| Input up to 24V | 2 x |
| Input OPTO      | 1 x |

# Dimensions [mm]



# Pinout Mating Connector



|                   |                                |
|-------------------|--------------------------------|
| Output open drain | 4 x                            |
| I/O RS-232        | 1 x                            |
| Power supply      | 10 to 25 V (DC)                |
| Power consumption | 4.5 W (dep. on operating mode) |