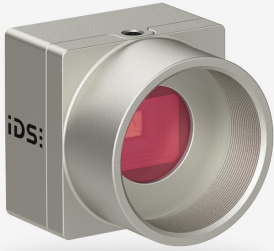


U3-3680XCP-M-GL (AB03080)



In series

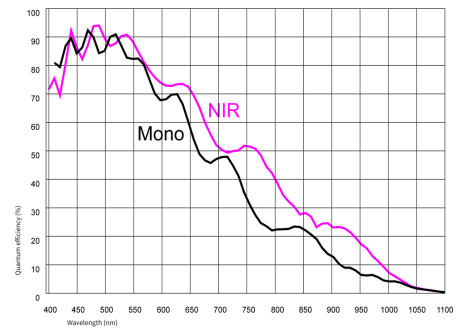
The model is in series and available for the long term.



Specification

Sensor

| | |
|---|----------------------|
| Sensor type | CMOS Mono |
| Shutter | Rolling shutter |
| Sensor characteristic | Linear |
| Readout mode | Progressive scan |
| Pixel Class | 5 MP |
| Resolution | 5.04 Mpix |
| Resolution (h x v) | 2592 x 1944 Pixel |
| Aspect ratio | 4:3 |
| ADC | 12 bit |
| Color depth (camera) | 12 bit |
| Optical sensor class | 1/2.5" |
| Optical Size | 5.702 mm x 4.277 mm |
| Optical sensor diagonal | 7.13 mm (1/2.24") |
| Pixel size | 2.2 μ m |
| Manufacturer | Onsemi |
| Sensor Model | AR0521SR2M09SURA0 |
| Gain (master/RGB) | 15x/- |
| AOI horizontal | same frame rate |
| AOI vertical | increased frame rate |
| AOI image width / step width | 48 / 12 |
| AOI image height / step width | 4 / 2 |
| AOI position grid (horizontal/vertical) | 8 / 2 |
| Binning horizontal | same frame rate |
| Binning vertical | increased frame rate |
| Binning method | Color |
| Binning factor | 2 |
| Subsampling horizontal | same frame rate |
| Subsampling vertical | increased frame rate |
| Subsampling method | Color |
| Subsampling factor | 2, 4 |



U3-3680XCP-M-GL (AB03080)

Model

| | |
|-----------------------------------|-------------------|
| Frame rate freerun mode | 48 |
| Frame rate trigger (continuous) | 44 |
| Frame rate trigger (maximum) | 44 |
| Exposure time (minimum - maximum) | 0.010 ms - 635 ms |
| Power consumption | 0.5 W - 1 W |

Ambient conditions

The temperature values given below refer to the outer device temperature of the camera housing.

| | |
|-------------------------------------|---------------------------------|
| Device temperature during operation | 0 °C - 55 °C / 32 °F - 131 °F |
| Device temperature during storage | -20 °C - 60 °C / -4 °F - 140 °F |
| Humidity (relative, non-condensing) | 20 % - 80 % |

Connectors

| | |
|---------------------|----------------------------|
| Interface connector | USB 3.0 micro-B, screwable |
| I/O connector | 8-pin connector |
| Power supply | USB cable |

Pin assignment I/O connector

| | |
|---|--|
| 1 | Voltage output 3.3 V |
| 2 | Ground (GND) |
| 3 | Flash output without optocoupler - Line 1 |
| 4 | Trigger input without optocoupler - Line 0 |
| 5 | General Purpose I/O (GPIO) 1 - Line 2 |
| 6 | General Purpose I/O (GPIO) 2 - Line 3 |
| 7 | Ground (GND) |
| 8 | USB Power: 5 V, max. 400 mA |



Camera rear view

Design

| | |
|------------------|-----------------------------|
| Lens Mount | C-Mount |
| IP code | IP30 |
| Dimensions H/W/L | 29.0 mm x 29.0 mm x 17.0 mm |
| Mass | 61 g |