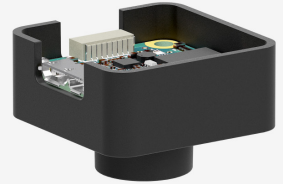
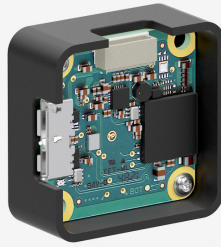


In development

The model is not yet in series production, but will be introduced shortly.

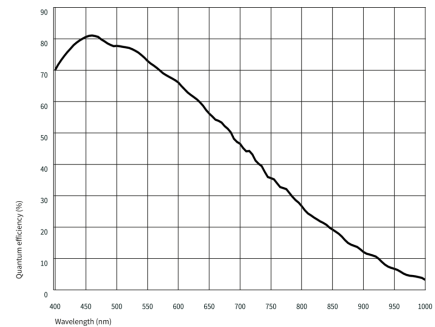


Specification

- PRELIMINARY -

Sensor

Sensor type	CMOS Mono
Shutter	Global Shutter
Sensor characteristic	Linear
Readout mode	Progressive scan
Pixel Class	5 MP
Resolution	5.10 Mpix
Resolution (h x v)	2472 x 2062 Pixel
Aspect ratio	5:4
ADC	12 bit
Color depth (camera)	12 bit
Optical sensor class	1/1.8"
Optical Size	6.773 mm x 5.650 mm
Optical sensor diagonal	8.82 mm (1/1.81")
Pixel size	2.74 μm
Manufacturer	Sony
Sensor Model	IMX568-AAMJ-C
Gain (master/RGB)	15.9x/-
AOI horizontal	same frame rate
AOI vertical	increased frame rate
AOI image width / step width	600 / 48
AOI image height / step width	14 / 8
AOI position grid (horizontal/vertical)	8 / 8
Binning horizontal	increased frame rate
Binning vertical	increased frame rate
Binning method	Mono
Binning factor	2
Subsampling horizontal	-
Subsampling vertical	-
Subsampling method	-
Subsampling factor	-



Subject to technical modifications (2023-08-07)

Model

Frame rate freerun mode (in 8-bit mode)	49 fps
Frame rate trigger (continuous)	50 fps
Frame rate trigger (maximum)	50 fps
Exposure time (minimum - maximum)	0.009 ms - 2000 ms
Power consumption	0.5 W - 1.2 W

Ambient conditions

The temperature values given below refer to the outer device temperature of the camera housing. For PCB versions, refer to the separate hints in the respective documentation.

Device temperature during operation	0 °C - 55 °C / 32 °F - 131 °F
Device temperature during storage	-20 °C - 80 °C / -4 °F - 176 °F
Humidity (relative, non-condensing)	20 % - 80 %

Connectors

Interface connector	USB 3.0 micro-B
I/O connector	8-pin connector
Power supply	USB cable

Pin assignment I/O connector

1	Voltage output 3.3 V
2	Ground (GND)
3	Flash output without optocoupler
4	Trigger input without optocoupler
5	General Purpose I/O (GPIO) 1
6	General Purpose I/O (GPIO) 2
7	Ground (GND)
8	USB Power: 5 V, max. 400 mA



Design

Lens Mount	S-Mount
IP code	-
Dimensions H/W/L	32.5 mm x 32.5 mm x 14.0 mm
Mass	10 g

Features

Image Acquisition	Freerun	✓
	Software trigger	✓
	Hardware trigger	✓
	Trigger controlled exposure	-
	Denoisier	-
	Long exposure	-
	Line scan	-
	Line scan highspeed	-
Flashing	Flashing	✓
	PWM flashing	-

Image Adjustments	Auto exposure	-
	Auto gain	-
	Auto whitebalance	-
	Color correction	-
	Gamma	-
	LUT	-
	Mirror/flip	X/Y
On-board Image Processing	Pixel formats	Mono8 Mono10g40IDS Mono12g24IDS
	Region of interest	✓
	Decimation (FPGA)	-
	Decimation (Sensor)	-
	Binning (FPGA)	-
	Binning (Sensor)	2x2 Horizontal and vertical binning can only be applied jointly.
Others	Chunks	-
	Sequencer	-
	Events	-
	Firmware update	✓
	1st supported firmware version	3.21