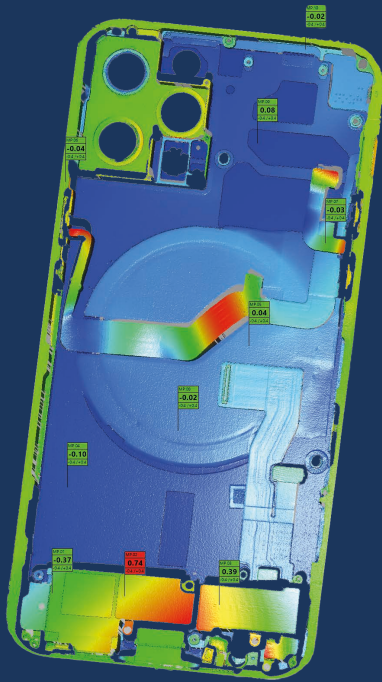


# MetrologyPackage

Brand  
New



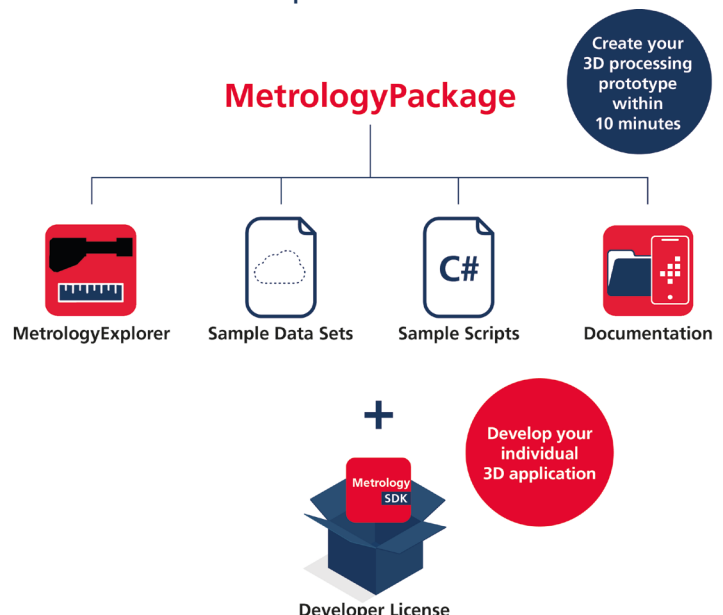
- Easy to use software package for super-fast prototyping and deployment
- Simplified multi-sensor calibration
- Inline inspection per Reference Point System (RPS)
- Intelligent algorithms for 3D point cloud processing
- Includes GUI tool, source code and 3D sample data

## 3D Measurements in Under 10 Minutes!

Install the sensor, scan the object, visualize and evaluate the measurement data: and all of these steps within just 10 minutes. As part of the new AT SolutionPackage, the MetrologyPackage focuses specifically on metrology applications and significantly simplifies the integration, configuration and commissioning of sensors. Therefore, the AT customer can start immediately using his new 3D sensor. And the absolute novelty: The first 3D point cloud can be created after just a few minutes.

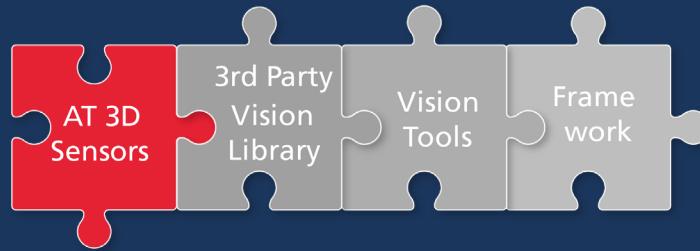
Particularly exciting: The package supports fully automatic alignment according to the reference point system (RPS). This makes it possible, among other things, to align the individual images of several partial scans, or even several sensors with different perspectives, with each other using reference data and to combine them into 3D images of the entire object. Until now, this was only possible with time-consuming manual measurements outside the production line.

Simplification is also the keyword when it comes to developing individual application solutions. With the Metrology Software Development Kit (SDK), AT offers its customers comprehensive support for this purpose: With typical demo programs for common applications which are included in the MetrologyPackage, 3D processing prototypes can be evaluated immediately. Furthermore, AT provides the source codes so that programmers can start easily adapting the evaluation scripts. For the development of customer-specific applications, a developer license is required.



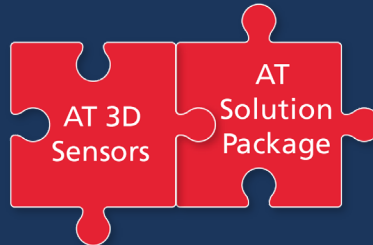
# 3D METROLOGY SOLUTION

**PREVIOUS**



Usual way to your individual solution

**NOW**



Easy way to your individual solution



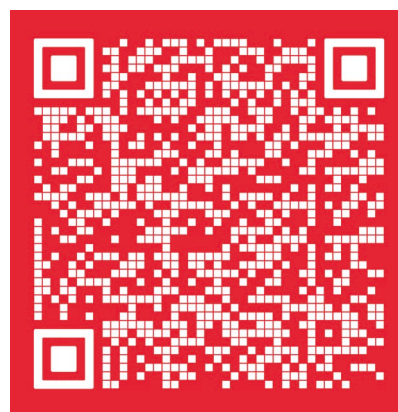
*" The ultimate 3D Metrology Solution is like a ,puzzle' and we have all parts now! "*

André Kasper, AT CTO



## Automation Technology

Learn more about our MetrologyPackage:  
[www.automationtechnology.de](http://www.automationtechnology.de)



AT - Automation Technology  
Hermann-Boessow-Str. 6-8  
23843 Bad Oldesloe  
Germany

Phone: +49 (0)4531 88011 - 66  
Email: [sales@automationtechnology.de](mailto:sales@automationtechnology.de)  
Web: [www.automationtechnology.de](http://www.automationtechnology.de)